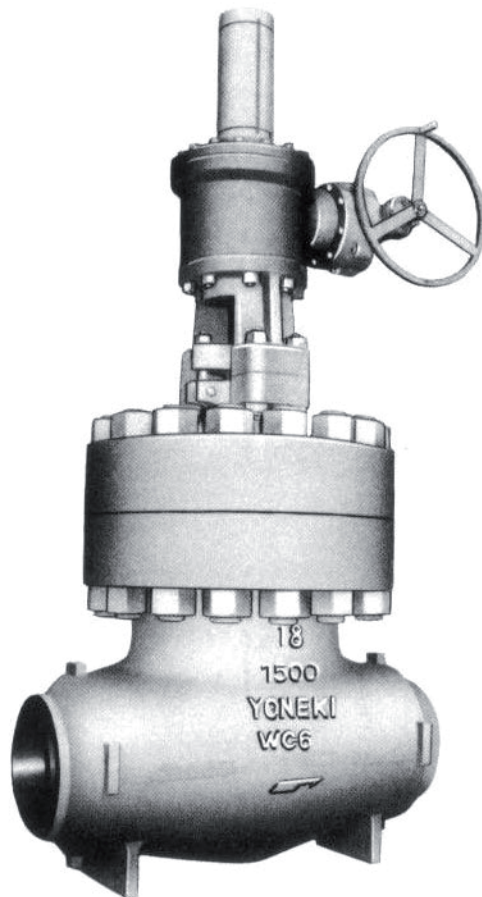


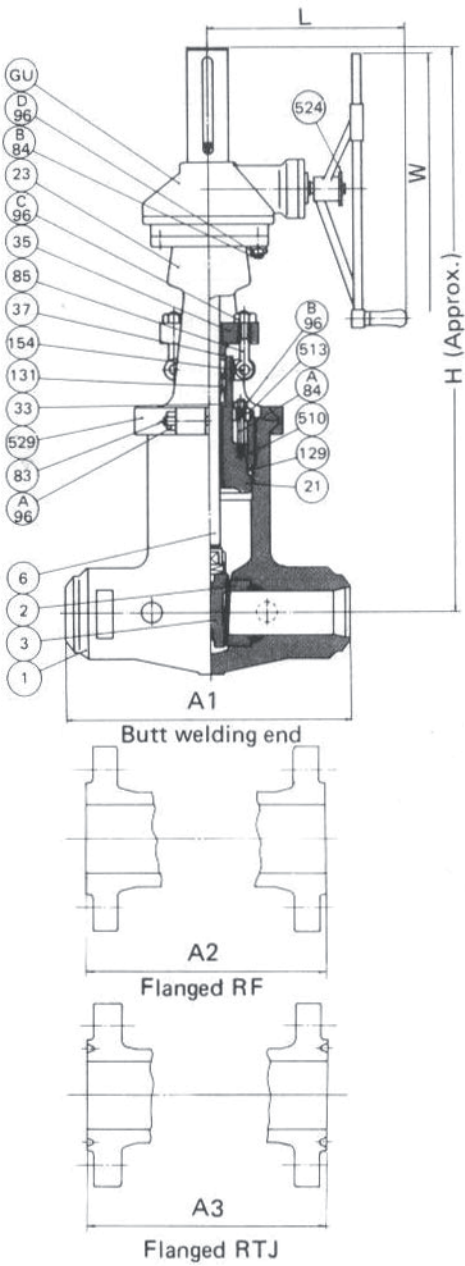
GATE VALVES

**CLASS 150-300-600-
900-1500-2500**

FLANGED ENDS
BUTT WELDING ENDS
BOLTED BONNET O.S.&Y.



ANSI 2500 CAST STEEL GATE VALVE PRESSURE SEAL BONNET O.S.&Y.



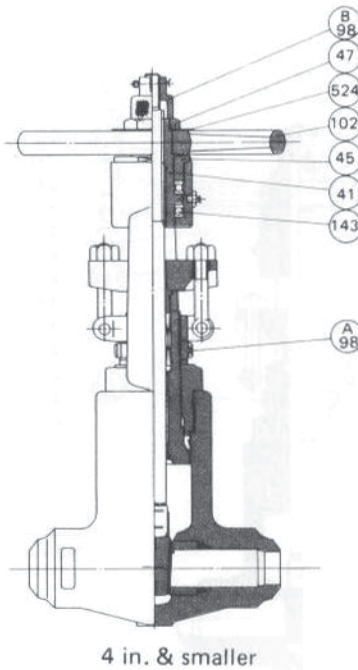
- Features
- End to end dimensions and Wall thicknesses conform to ANSI and API specifications.
- Gear operator can be furnished upon request.
- Flange dimensions conform to ANSI B16.5.

Figure No.

GA254WC	2500 lb Gate Weld
GA254 RC	2500 lb Gate RF
GA254 JC	2500 lb Gate RTJ

Material Specifications Trim No. 5

NO.	PART NAME	MATERIAL
GU	Bevel Gear Unit	Cast Iron + etc.
529	Body Clamp	ASTM A216 Gr. WCB
524	Name Plate	18Cr-8Ni S. Steel
513	Retainer Plate	ASTM A105
510	Bonnet Retainer	ASTM A105
154	Eye Bolt Pin	13% Cr. S. Steel
143	Bearing	Bearing Steel
131	Packing	*4
129	Gasket	*3
102	Handwheel	Nodular Iron
98B	Lift Stopper	Carbon Steel
98A	Bonnet Nut	13% Cr. S. Steel
96D	Yoke Bolt Nut	ASTM A194 Gr.2H
96C	Eye Bolt Nut	ASTM A194 Gr.2H
96B	Bonnet Bolt Nut	ASTM A194 Gr.2H
96A	Body Clamp Bolt Nut	ASTM A194 Gr.2H
85	Eye Bolt	ASTM A193 Gr.B7
84B	Yoke Bolt	ASTM A193 Gr.B7
84A	Bonnet Bolt	ASTM A193 Gr.B7
83	Body Clamp Bolt	ASTM A193 Gr.B7
47	Lock Nut	Carbon Steel
45	Sleeve Nut	Carbon Steel
41	Yoke Sleeve	Al-Bronze
37	Gland	ASTM A182 Gr.F6a
35	Gland Flange	Carbon Steel
33	Packing Washer	ASTM A182 Gr.F6a
23	Yoke	ASTM A216 Gr.WCB
21	Bonnet	ASTM A105 *2
6	Stem	ASTM A182 Gr.F6a
3	Wedge	ASTM A105 + STL *1
2	Body Seat Ring	ASTM A105 + STL
1	Body	ASTM A216 Gr.WCB



- Note *1 5 in. & larger ASTM A216 Gr. WCB + STL.
 *2 6 in. & larger ASTM A216 Gr. WCB
 *3 Soft iron pressure seal gasket
 *4 Inconel wire reinforced asbestos braided packing

Dimensions (in./mm)

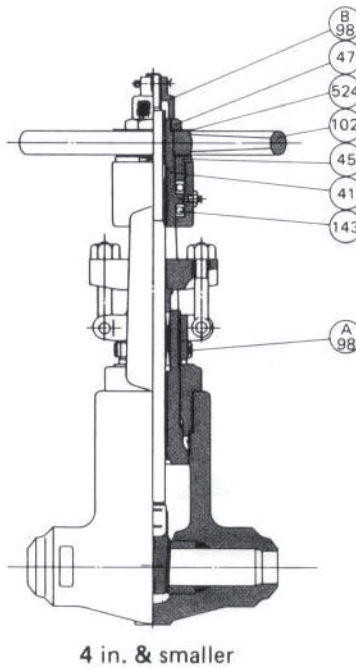
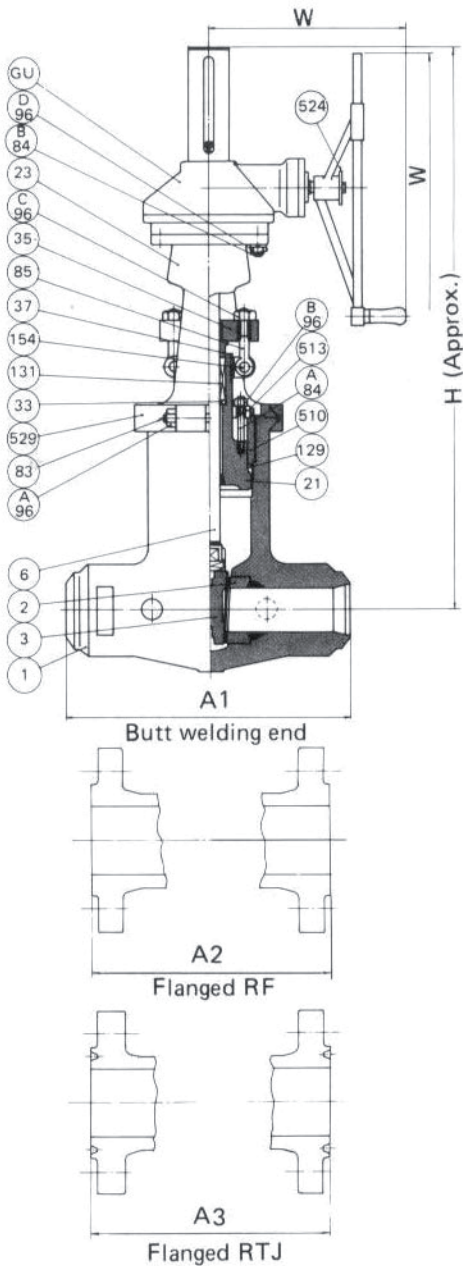
Nom. Size	Dimensions (in./mm)													
	2	2-1/2	3	4	5	6	8	10	12	14	16	18	20	24
A1	11 279	13 330	14-1/2 368	18 457	21 533	24 610	30 762	36 914	41 1041	44 1118	49 1245	55 1397	61 1549	68 1727
A2	17-3/4 451	20 508	22-3/4 578	26-1/2 673	31-1/4 794	36 914	40-1/4 1022	50 1270	56 1422	-	-	-	-	-
A3	17-7/8 454	20-1/4 514	23 584	26-7/8 683	31-3/4 806	36-1/2 927	40-7/8 1038	50-7/8 1292	56-7/8 1445	-	-	-	-	-
H	23-3/8 594	29-5/8 753	29-5/8 753	34-1/4 870	42-1/4 1073	47-1/4 1201	57-1/8 1451	63-3/8 1610	82-1/2 2096	94-1/8 2291	97-1/4 2470	116-1/8 2950	128-3/4 3270	153-5/8 3902
W	14 355	17-3/4 450	19-11/16 500	23-5/8 600	27-3/16 690	24 610	24 610	24 610	30 760	30 760	24 610	24 610	24 610	30 760
L	-	-	-	-	-	17 432	20-3/16 512	20-3/16 512	21-13/16 554	21-13/16 554	20-3/16 512	20-3/16 512	20-3/16 512	20-1/4 515
Weight (Approx.)	RF	187 85	298 135	364 165	765 347	1196 542	1786 810	2911 1320	5235 2374	7541 3420	-	-	-	-
	BW	110 50	198 90	209 95	419 190	871 395	1147 520	1632 740	3528 1600	6615 3000	7497 3400	9261 4200	11025 5000	13605 6170

ANSI 1500 CAST STEEL GATE VALVE PRESSURE SEAL BONNET O.S.&Y.

- Features
- End to end dimensions and Wall thicknesses conform to ANSI and API specifications.

Figure No.

GA154WC	1500 lb Gate Weld
GA154RC	1500 lb Gate RF
GA154JC	1500 lb Gate RTJ



Material Specification	Trim No. 5	
GU	Bevel Gear Unit	Cast Iron + etc.
529	Body Clamp	ASTM A216 Gr. WCB
524	Name Plate	18Cr-8Ni S. Steel
513	Retainer Plate	ASTM A105
510	Bonnet Retainer	ASTM A105
154	Eye Bolt Pin	13% Cr. S. Steel
143	Bearing	Bearing Steel
131	Packing	*4
129	Gasket	*3
102	Handwheel	Nodular Iron
98B	Lift Stopper	Carbon Steel
98A	Bonnet Nut	13% Cr. S. Steel
96D	Yoke Bolt Nut	ASTM A194 Gr.2H
96C	Eye Bolt Nut	ASTM A194 Gr.2H
96B	Bonnet Bolt Nut	ASTM A194 Gr.2H
96A	Body Clamp Bolt Nut	ASTM A194 Gr.2H
85	Eye Bolt	ASTM A193 Gr.B7
84B	Yoke Bolt	ASTM A193 Gr.B7
84A	Bonnet Bolt	ASTM A193 Gr. B7
83	Body Clamp Bolt	ASTM A193 Gr. B7
47	Lock Nut	Carbon Steel
45	Sleeve Nut	Carbon Steel
41	Yoke Sleeve	Al-Bronze
37	Gland	ASTM A182 Gr.F6a
35	Gland Flange	Carbon Steel
33	Packing Washer	ASTM A182 Gr.F6a
23	Yoke	ASTM A216 Gr.WCB
21	Bonnet	ASTM A105*2
6	Stem	ASTM A182 Gr.F6a
3	Wedge	ASTM A105 + STL*1
2	Body Seat Ring	ASTM A105 + STL
1	Body	ASTM A216 Gr.WCB
NO.	PART NAME	MATERIAL

Note *1 5 in. & larger ASTM A216 Gr. WCB + STL.
 *2 6 in. & larger ASTM A216 Gr. WCB
 *3 Soft iron pressure seal gasket
 *4 Inconel wire reinforced asbestos braided packing

Dimensions (in./mm)

Nom. Size	in.	2	2-1/2	3	4	5	6	8	10	12	14	16	18	20	24
A1	in.	8-1/2	10	12	16	19	22	28	34	39	42	47	53	58	76-1/2
	mm	216	254	305	406	483	559	711	864	991	1067	1194	1346	1473	1943
A2	in.	14-1/2	16-1/2	18-1/2	21-1/2	26-1/2	27-3/4	32-3/4	39	44-1/2	49-1/2	54-1/2	60-1/2	65-1/2	76-1/2
	mm	368	419	470	546	673	705	832	991	1130	1257	1384	1537	1664	1943
A3	in.	14-5/8	16-5/8	18-5/8	21-5/8	26-5/8	28	33-1/8	39-3/8	45-1/8	50-1/4	55-3/8	61-3/8	66-3/8	77-5/8
	mm	371	422	473	549	676	711	841	1000	1146	1276	1407	1559	1686	1972
H	in.	23-3/8	29-5/8	29-5/8	34	43-5/8	48	51-5/8	64-3/4	77-3/4	87-1/4	91-3/4	111-1/8	122-1/8	148-1/4
	mm	594	753	753	864	1108	1219	1311	1645	1975	2216	2331	2823	3102	3766
W	in.	11-13/16	17-3/4	17-3/4	19-11/16	27-3/16	24	24	24	24	30	30	30	24	24
	mm	300	450	450	500	690	610	610	610	610	760	760	760	610	610
L	in.	-	-	-	-	-	17	17	20-3/16	20-3/16	21-13/16	21-13/16	21-13/16	20-3/16	20-3/16
	mm	-	-	-	-	-	432	432	512	512	554	554	554	512	512
RF	lb	132	207	265	459	772	1058	2007	3109	4586	5755	7938	13142	16251	23395
	Kg	60	94	120	208	350	480	910	1410	2080	2610	3600	5960	7370	10610
BW	lb	88	141	176	326	518	750	1499	2249	3197	3969	6064	10209	12613	18169
	Kg	40	64	80	148	235	340	680	1020	1450	1800	2750	4630	5720	8240

2
PRESSURE SEAL BONNET
GATE VALVES

ANSI 900 CAST STEEL GATE VALVE PRESSURE SEAL BONNET O.S.&Y.

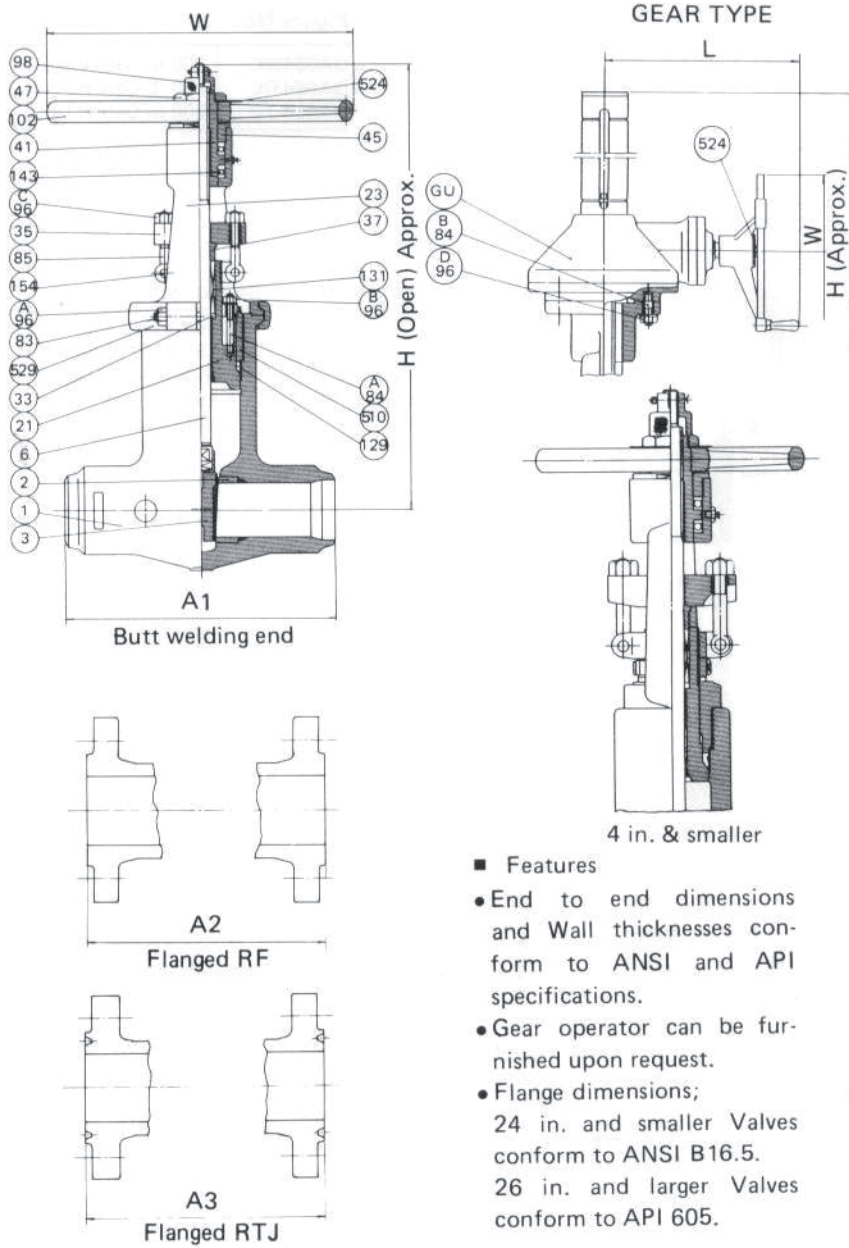


Figure No.

GA094WC	900 lb Gate Weld
GA094 RC	900 lb Gate RF
GA094 JC	900 lb Gate RTJ

Material Specifications Trim No. 5

NO.	PART NAME	MATERIAL
GU	Bevel Gear Unit	Cast Iron + etc
529	Body Clamp	ASTM A216 Gr. WCB
524	Name Plate	18Cr-8Ni S. Steel
510	Bonnet Retainer	ASTM A105
154	Eye Bolt Pin	13% Cr. S. Steel
143	Bearing	Bearing Steel
131	Packing	*4
129	Gasket	*3
102	Handwheel	Nodular Iron
98	Lift Stopper	Carbon Steel
96D	Yoke Bolt Nut	ASTM A194 Gr.2H
96C	Eye Bolt Nut	ASTM A194 Gr.2H
96B	Bonnet Bolt Nut	ASTM A194 Gr.2H
96A	Body Clamp Bolt Nut	ASTM A194 Gr.2H
85	Eye Bolt	ASTM A193 Gr.B7
84B	Yoke Bolt	ASTM A193 Gr.B7
84A	Bonnet Bolt	ASTM A193 Gr.B7
83	Body Clamp Bolt	ASTM A193 Gr.B7
47	Lock Nut	Carbon Steel
45	Sleeve Nut	Carbon Steel
41	Yoke Sleeve	Al-Bronze
37	Gland	ASTM A182 Gr.F6a
35	Gland Flange	Carbon Steel
33	Packing Washer	ASTM A182 Gr.F6a
23	Yoke	ASTM A216 Gr.WCB
21	Bonnet	ASTM A105*2
6	Stem	ASTM A182 Gr.F6a
3	Wedge	ASTM A105 + STL*1
2	Body Seat Ring	ASTM A105 + STL
1	Body	ASTM A216 Gr. WCB

Features

- End to end dimensions and Wall thicknesses conform to ANSI and API specifications.
- Gear operator can be furnished upon request.
- Flange dimensions; 24 in. and smaller Valves conform to ANSI B16.5. 26 in. and larger Valves conform to API 605.

- Note
- *1 5 in. & larger ASTM A216 Gr. WCB + STL.
 - *2 6 in. & larger ASTM A216 Gr. WCB
 - *3 Soft iron pressure seal gasket
 - *4 Inconel wire reinforced asbestos braided packing

Dimensions (in./mm)

Nom. Size	in.	2	2-1/2	3	4	5	6	8	10	12	14	16	18	20	24	26	28	30	36
	mm	50	65	80	100	125	150	200	250	300	350	400	450	500	600	650	700	750	900
A1	in.	8-1/2	10	12	14	17	20	26	31	36	39	43	48	52	61	64-1/2	68	71-1/2	83-1/2
	mm	216	254	305	356	432	508	660	787	914	991	1092	1219	1321	1549	1638	1727	1816	2121
A2	in.	14-1/2	16-1/2	15	18	22	24	29	33	38	40-1/2	44-1/2	48	52	61				
	mm	368	419	381	457	559	610	737	838	965	1029	1130	1219	1321	1549				
A3	in.	14-5/8	16-5/8	15-1/8	18-1/8	22-1/8	24-1/8	29-1/8	33-1/8	38-1/8	40-7/8	44-7/8	48-1/2	52-1/2	61-3/4				
	mm	371	422	384	460	562	613	740	841	968	1038	1140	1232	1333	1568				
H	in.	23-3/8	29-5/8	29-3/4	34	37-1/8	39-7/8	50-1/4	60-3/4	70-1/8	79-3/4	89	97-1/4	108-1/4	127-5/8	138-1/4	149	159-1/2	191-3/8
	mm	594	753	756	864	943	1013	1276	1543	1781	2026	2261	2470	2750	3242	3512	3785	4051	4861
W	in.	11-13/16	17-3/4	17-3/4	19-11/16	22-1/16	22-1/16	18-1/8	24	24	24	24	30	30	24	24	24	24	30
	mm	300	450	450	500	560	560	460	610	610	610	610	760	760	610	610	610	610	760
L	in.							16-13/16	17	20-3/16	20-3/16	20-3/16	21-13/16	21-13/16	20-3/16	20-3/16	20-3/16	20-3/16	20-1/4
	mm							427	432	512	512	512	554	554	512	512	512	512	515
Weight (Approx.)	RF	lb	132	207	225	331	518	617	1455	2117	2976	3749	5292	7321	9702	14928			
		Kg	60	94	102	150	235	280	660	960	1350	1700	2400	3320	4400	6770			
BW	lb	88	141	176	221	353	408	1091	1621	2315	3087	4300	6020	8125	11973	14046	16284	18698	26923
	Kg	40	64	80	100	160	185	495	735	1050	1400	1950	2730	3685	5430	6370	7385	8480	12210

ANSI 600 CAST STEEL GATE VALVE PRESSURE SEAL BONNET O.S.&Y.

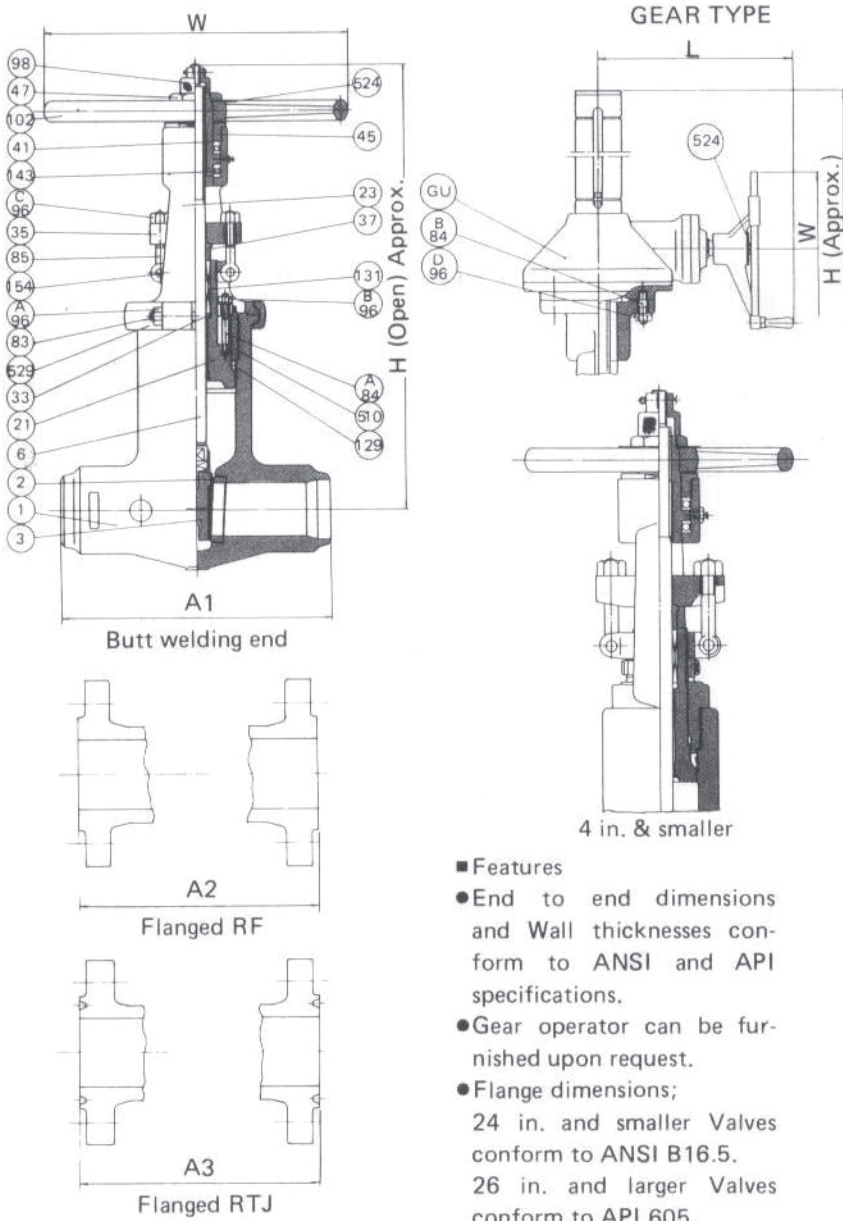


Figure No.

GA064WC	600 lb Gate Weld
GA064RC	600 lb Gate RF
GA064JC	600 lb Gate RTJ

Material Specification Trim No. 8

NO.	PART NAME	MATERIAL
GU	Bevel Gear Unit	Cast Iron + etc.
529	Body Clamp	ASTM A216 Gr. WCB
524	Name Plate	18Cr-8Ni S. Steel
510	Bonnet Retainer	ASTM A105
154	Eye Bolt Pin	13% Cr. S. Steel
143	Bearing	Bearing Steel
131	Packing	*4
129	Gasket	*3
102	Handwheel	Nodular Iron
98	Lift Stopper	Carbon Steel
96D	Yoke Bolt Nut	ASTM A194 Gr.2H
96C	Eye Bolt Nut	ASTM A194 Gr.2H
96B	Bonnet Bolt	ASTM A194 Gr.2H
96A	Body Clamp Bolt Nut	ASTM A194 Gr.2H
85	Eye Bolt	ASTM A193 Gr.B7
84B	Yoke Bolt	ASTM A193 Gr.B7
84A	Bonnet Bolt	ASTM A193 Gr.B7
83	Body Clamp Bolt	ASTM A193 Gr.B7
47	Lock Nut	Carbon Steel
45	Sleeve Nut	Carbon Steel
41	Yoke Sleeve	Al-Bronze
37	Gland	ASTM A182 Gr.F6a
35	Gland Flange	Carbon Steel
33	Packing Washer	ASTM A182 Gr.F6a
23	Yoke	ASTM A216 Gr.WCB
21	Bonnet	ASTM A105 *2
6	Stem	ASTM A182 Gr.F6a
3	Wedge	ASTM A182 Gr. F6a *1
2	Body Seat Ring	ASTM A105 + STL
1	Body	ASTM A216 Gr.WCB

- Features
- End to end dimensions and Wall thicknesses conform to ANSI and API specifications.
- Gear operator can be furnished upon request.
- Flange dimensions; 24 in. and smaller Valves conform to ANSI B16.5. 26 in. and larger Valves conform to API 605.

- Note *1 5 in. & larger ASTM A216 Gr. WCB + 13% Cr. deposit
 *2 6 in. & larger ASTM A216 Gr. WCB
 *3 Soft iron pressure seal gasket
 *4 Inconel wire reinforced asbestos braided packing

Dimensions (in./mm)

Nom Size	in.	2	2-1/2	3	4	5	6	8	10	12	14	16	18	20	24	26	28	30	36
A1	in.	11-1/2	13	14	17	20	22	26	31	33	35	39	43	47	55	57	61	65	82
A1	mm	292	330	356	432	508	559	660	787	838	889	991	1092	1194	1397	1448	1549	1651	2083
A2	in.	11-1/2	13	14	17	20	22	26	31	33	35	39	43	47	55	57	61	65	82
A2	mm	292	330	356	432	508	559	660	787	838	889	991	1092	1194	1397	1448	1549	1651	2083
A3	in.	11-5/8	13-1/8	14-1/8	17-1/8	20-1/8	22-1/8	26-1/8	31-1/8	33-1/8	35-1/8	39-1/8	43-1/8	47-1/4	55-3/8	-	-	-	-
A3	mm	295	333	359	435	511	562	664	791	841	892	994	1095	1200	1407	-	-	-	-
H	in.	23-1/4	24-3/4	26-1/4	36	39-3/8	42-1/2	49-7/8	59-1/2	70-1/2	73-1/8	85-1/8	88-5/8	97-1/4	118-1/8	128	137-7/8	149	179-1/2
H	mm	590	629	667	914	1000	1080	1267	1511	1791	1857	2162	2251	2470	3000	3251	3502	3785	4559
W	in.	7-7/8	9-7/8	9-7/8	11-13/16	15-3/4	19-11/16	22-1/16	27-3/16	24	24	24	24	24	30	30	30	24	24
W	mm	200	250	250	300	400	500	560	690	610	610	610	610	610	760	760	760	610	610
L	in.	-	-	-	-	-	-	-	17	17	17	20-3/16	20-3/16	20-3/16	21-13/16	21-13/16	21-13/16	20-3/16	20-3/16
L	mm	-	-	-	-	-	-	-	432	432	432	512	512	512	554	554	554	512	512
RF	lb	154	209	221	326	459	604	1014	1588	2205	2944	3936	4994	6218	8941	9845	11312	13098	18930
	Kg	70	95	100	148	208	274	460	720	1000	1335	1785	2265	2820	4055	4465	5130	5940	8585
BW	lb	137	176	185	254	331	441	783	1224	1764	2426	3197	4046	4994	7188	7784	8919	10364	14994
	Kg	60	80	84	115	150	200	355	555	800	1100	1450	1835	2265	3260	3530	4045	4700	6800

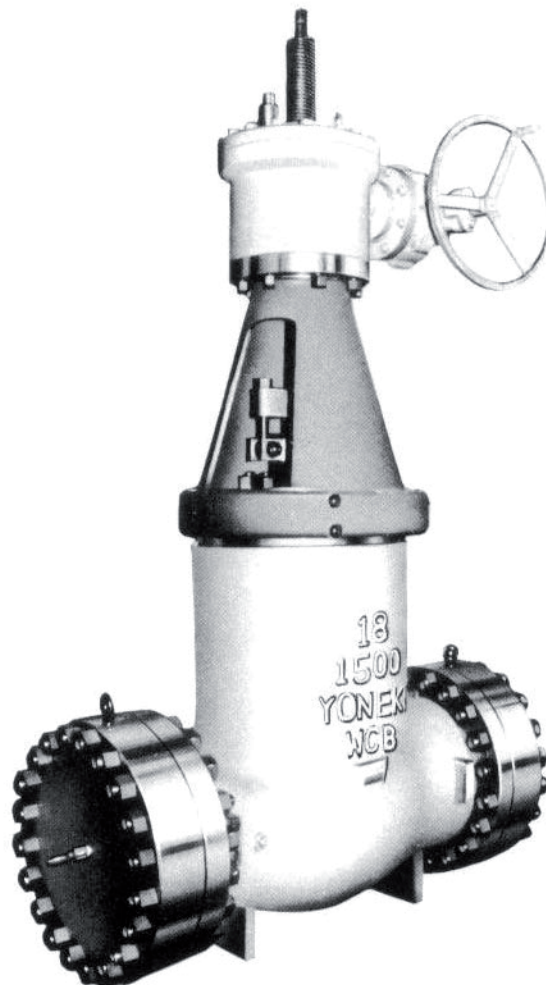
2
PRESSURE SEAL BONNET GATE VALVES

GATE VALVES

CLASS 600-900-1500-2500

FLANGED ENDS
BUTT WELDING ENDS

PRESSURE SEAL BONNET O.S.&Y.



ANSI 1500 CAST STEEL GATE VALVE

BOLTED BONNET O.S. & Y.

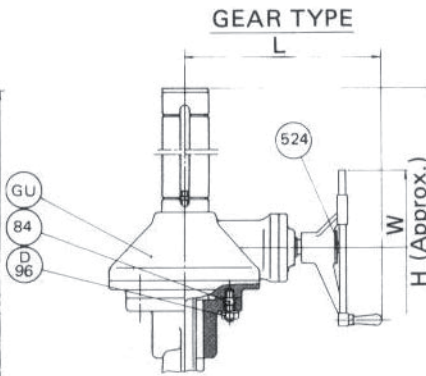
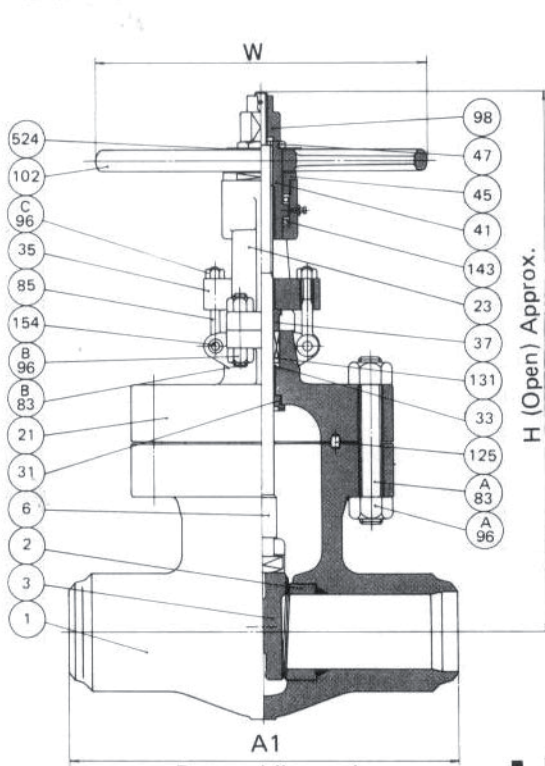


Figure No.

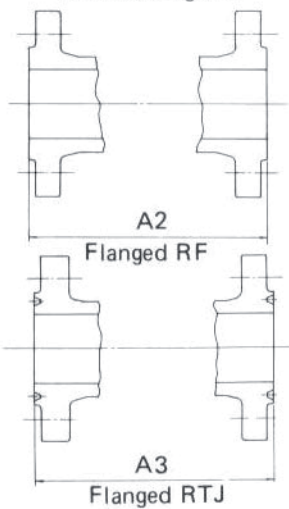
GA150WC	1500 lb Gate Weld
GA150RC	1500 lb Gate RF
GA150JC	1500 lb Gate RTJ

Material Specifications Trim No. 5

NO.	PART NAME	MATERIAL
GU	Bevel Gear Unit	Cast Iron + etc
524	Name Plate	18Cr-8Ni S. Steel
154	Eye Bolt Pin	13% Cr. S. Steel
143	Bearing	Bearing Steel
131	Packing	*3
125	Gasket	*2
102	Handwheel	Nodular Iron
98	Lift Stopper	Carbon Steel
96D	Yoke Bolt Nut	ASTM A194 Gr.2H
96C	Eye Bolt Nut	ASTM A194 Gr.2H
96B	Bonnet Yoke Bolt Nut	ASTM A194 Gr.2H
96A	Bonnet Bolt Nut	ASTM A194 Gr.2H
85	Eye Bolt	ASTM A193 Gr.B7
84	Yoke Bolt	ASTM A193 Gr.B7
83B	Bonnet Yoke Bolt	ASTM A193 Gr.B7
83A	Bonnet Bolt	ASTM A193 Gr.B7
47	Lock Nut	Carbon Steel
45	Sleeve Nut	Carbon Steel
41	Yoke Sleeve	Al-Bronze
37	Gland	ASTM A182 Gr.F6a
35	Gland Flange	Carbon Steel
33	Packing Washer	ASTM A182 Gr.F6a
31	Bonnet Bush	ASTM A182 Gr.F6a
23	Yoke	ASTM A216 Gr.WCB
21	Bonnet	ASTM A216 Gr.WCB
6	Stem	ASTM A182 Gr.F6a
3	Wedge	ASTM A105 + STL *1
2	Body Seat Ring	ASTM A105 + STL
1	Body	ASTM A216 Gr.WCB

■ Features

- End to end dimensions and Wall thicknesses conform to ANSI and API specifications.
- Gear operator can be furnished upon request.



- Note *1 4 in. & larger ASTM A216 Gr. WCB + STL.
 *2 Soft iron ring joint gasket
 *3 Inconel wire reinforced asbestos braided packing

Dimensions (in./mm)

		2	2-1/2	3	4	5	6	8	10	12	14	16	18	20	24
Nom. Size	in.	2	2-1/2	3	4	5	6	8	10	12	14	16	18	20	24
	mm	50	65	80	100	125	150	200	250	300	350	400	450	500	600
A1	in.	14-1/2	16-1/4	18-1/2	21-1/2	26-1/2	27-3/4	32-3/4	39	44-1/2	49-1/2	54-1/2	60-1/2	65-1/2	76-1/2
	mm	368	419	470	546	673	705	832	991	1130	1257	1384	1537	1664	1943
A2	in.	14-1/2	16-1/4	18-1/2	21-1/2	26-1/2	27-3/4	32-3/4	39	44-1/2	49-1/2	54-1/2	60-1/2	65-1/2	76-1/2
	mm	368	419	470	546	673	705	832	991	1130	1257	1384	1537	1664	1943
A3	in.	14-5/8	16-5/8	18-5/8	21-5/8	26-5/8	28	33-1/8	39-3/8	45-1/8	50-1/4	55-3/8	61-3/8	66-3/8	77-5/8
	mm	371	422	473	549	676	711	841	1000	1146	1276	1407	1559	1686	1972
H	in.	26	27-5/8	33-7/8	36-7/8	43-3/8	48-1/4	56	66-3/8	78-5/8	85-1/8	97-7/8	108-3/4	122-1/8	146-1/2
	mm	660	702	860	937	1102	1226	1422	1686	1997	2162	2486	2762	3102	3721
W	in.	11-13/16	15-3/4	17-11/16	19-11/16	27-3/16	24	24	24	24	30	30	30	24	24
	mm	300	400	450	500	690	610	610	610	610	760	760	760	610	610
L	in.	-	-	-	-	-	17	17	20-3/16	20-3/16	21-13/16	21-13/16	21-13/16	20-3/16	20-3/16
	mm	-	-	-	-	-	432	432	512	512	554	554	554	512	512
RF	lb	249	342	430	750	1224	1621	2602	4267	7199	9074	15325	19845	24542	35875
	Kg	113	155	195	340	555	735	1180	1935	3265	4115	6950	9000	11130	16270
BW	lb	198	287	353	529	970	1235	2073	3396	5865	7056	13230	17067	21080	30363
	Kg	90	130	160	240	440	560	940	1540	2660	3200	6000	7740	9560	13770

1
BOLTED BONNET
GATE VALVES

ANSI 900 CAST STEEL GATE VALVE

BOLTED BONNET O.S. & Y.

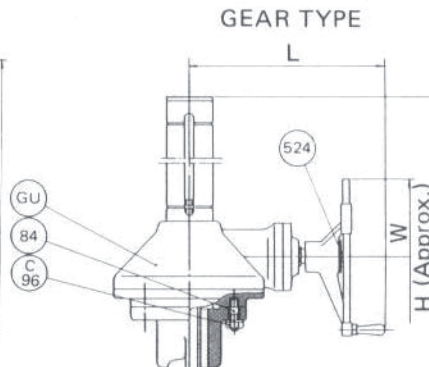
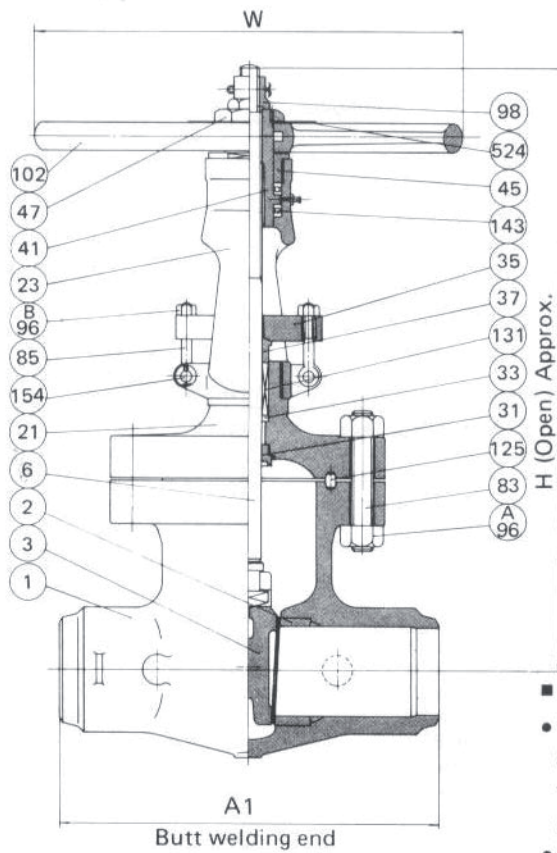


Figure No.

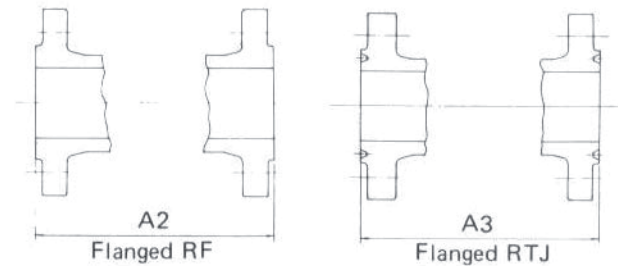
GA090WC	900 lb Gate Weld
GA090RC	900 lb Gate RF
GA090JC	900 lb Gate RTJ

Material Specifications Trim No. 5

NO.	PART NAME	MATERIAL
GU	Bevel Gear Unit	Cast Iron + etc
524	Name Plate	18Cr-8Ni S. Steel
154	Eye Bolt Pin	13% Cr. S. Steel
143	Bearing	Bearing Steel
131	Packing	*3
125	Gasket	*2
102	Handwheel	Nodular Iron
98	Lift Stopper	Carbon Steel
96C	Yoke Bolt Nut	ASTM A194 Gr.2H
96B	Eye bolt Nut	ASTM A194 Gr.2H
96A	Bonnet Bolt Nut	ASTM A194 Gr.2H
85	Eye Bolt	ASTM A193 Gr.B7
84	Yoke Bolt	ASTM A193 Gr.B7
83	Bonnet Bolt	ASTM A193 gr.B7
47	Lock Nut	Carbon Steel
45	Sleeve Nut	Carbon Steel
41	Yoke Sleeve	Al-Bronze
37	Gland	ASTM A182 Gr.F6a
35	Gland Flange	Carbon Steel
33	Packing Washer	ASTM A182 Gr.F6a
31	Bonnet Bush	ASTM A182 Gr.F6a
23	Yoke	ASTM A216 Gr.WCB
21	Bonnet	ASTM A216 Gr.WCB
6	Stem	ASTM A182 Gr.F6a
3	Wedge	ASTM A105 + STL *1
2	Body Seat Ring	ASTM A105 + STL
1	Body	ASTM A216 Gr.WCB

■ Features

- End to end dimensions and Wall thicknesses conform to ANSI and API specifications.
- Gear operator can be furnished upon request.



Dimensions (in./mm)

Nom. Size	in.	2	2-1/2	3	4	5	6	8	10	12	14	16	18	20	24
A1	in.	14-1/2	16-1/2	15	18	22	24	29	33	38	40-1/2	44-1/2	48	52	61
A2	in.	14-1/2	16-1/2	15	18	22	24	29	33	38	40-1/2	44-1/2	48	52	61
A3	in.	14-5/8	16-3/8	15-1/8	18-1/8	22-1/8	24-1/8	29-1/8	33-1/8	38-1/8	40-7/8	44-7/8	48-1/2	52-1/2	61-3/4
H	in.	26	27-5/8	31-1/2	35-1/2	41-3/8	44-3/4	56-5/8	61-1/4	67-1/2	74-7/8	80-3/4	100-5/8	110-1/4	124
W	in.	11-13/16	15-3/4	17-11/16	17-11/16	27-3/16	27-3/16	18-1/8	24	24	24	24	30	30	24
L	in.	-	-	-	-	-	-	16-7/16	17	20-3/16	20-3/16	20-3/16	21-13/16	21-13/16	20-3/16
RF	lb	249	342	364	485	783	1091	1907	2315	3528	4895	6615	8533	10716	16097
RF	Kg	113	155	165	220	355	495	865	1050	1600	2220	3000	3870	4860	7300
BW	lb	198	287	286	397	624	882	1566	1830	2977	4167	5656	7277	8930	13495
BW	Kg	90	130	130	180	285	400	710	830	1350	1890	2565	3300	4050	6120

ANSI 600 CAST STEEL GATE VALVE

BOLTED BONNET O.S. & Y.

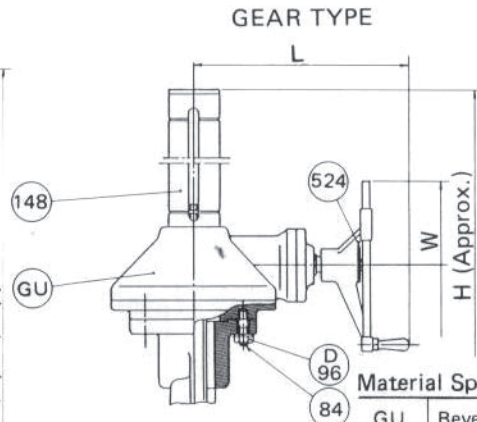
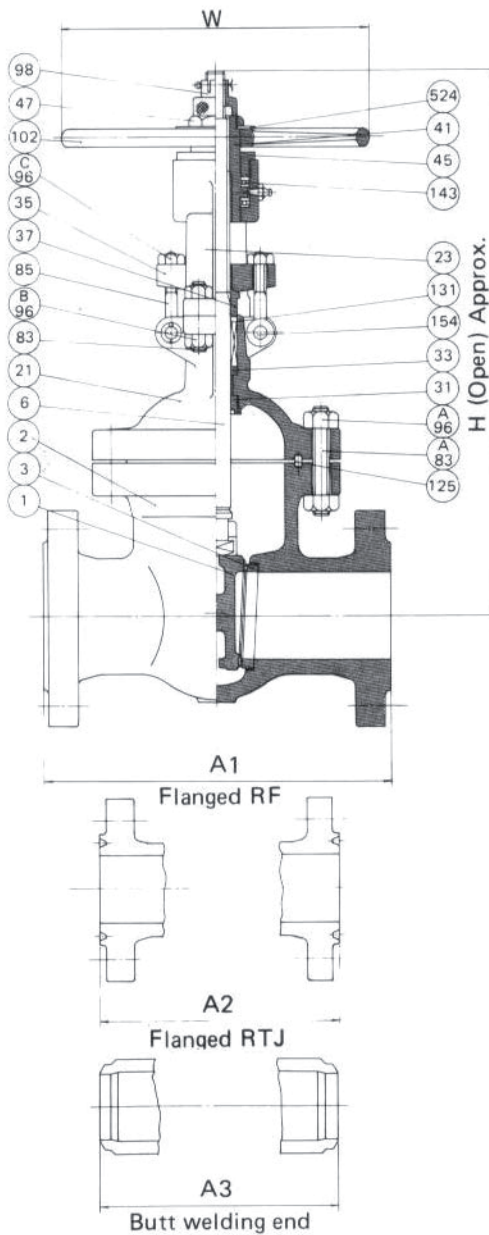


Figure No.

GA060RA	600 lb Gate RF
GA060JA	600 lb Gate RTJ
GA060WA	600 lb Gate Weld

1
BOLTED BONNET GATE VALVES

Material Specifications Trim No. 8

■ Features

- End to end dimensions and Wall thickness conform to ANSI and API specifications.
- 4 in. and smaller Valves have a one piece Bonnet and Yoke design.
- 5 in. and larger Valves have a two piece Bonnet and Yoke design.
- 4 in. and smaller Valves have a plain solid Wedge.
- 5 in. and larger Valves have a one piece flexible Wedge.
- Gear operator can be furnished upon request.
- Flange dimensions; 24 in. and smaller Valves conform to ANSI B16.5. 26 in. and larger Valves conform to API 605.

NO.	PART NAME	MATERIAL
GU	Bevel Gear Unit	Cast Iron + etc.
524	Name Plate	18Cr-8Ni S. Steel
154	Eye Bolt Pin	13% Cr S. Steel
148	Stem Cap	Carbon Steel
143	Bearing	Bearing Steel
131	Packing	*3
125	Gasket	*2
102	Handwheel	Nodular Iron
98	Lift Stopper	Carbon Steel
96D	Yoke Bolt Nut	ASTM A194 Gr. 2H
96C	Eye Bolt Nut	ASTM A194 Gr. 2H
96B	Bonnet Yoke Bolt Nut	ASTM A194 Gr. 2H
96A	Bonnet Bolt Nut	ASTM A194 Gr. 2H
85	Eye Bolt	ASTM A193 Gr. B7
84	Yoke Bolt	ASTM A193 Gr. B7
83B	Bonnet Yoke Bolt	ASTM A193 Gr. B7
83A	Bonnet Bolt	ASTM A193 Gr. B7
47	Lock Nut	Carbon Steel
45	Sleeve Nut	Carbon Steel
41	Yoke Sleeve	Al-Bronze
37	Gland	ASTM A182 Gr. F6a
35	Gland Flange	Carbon Steel
33	Packing Washer	ASTM A182 Gr. F6a
31	Bonnet Bush	ASTM A182 Gr. F6a
23	Yoke	ASTM A216 Gr. WCB
21	Bonnet	ASTM A216 Gr. WCB
6	Stem	ASTM A182 Gr. F6a
3	Wedge	ASTM A182 Gr. F6a*1
2	Body Seat Ring	ASTM A105 + STL
1	Body	ASTM A216 Gr. WCB

Note *1 5 in. & larger ASTM A216 Gr. WCB + 13% Cr. deposit
 *2 Soft iron ring joint gasket
 *3 Inconel wire reinforced asbestos braided packing

Dimensions (in./mm)

Nom. Size	in.	2	2-1/2	3	4	5	6	8	10	12	14	16	18	20	24	26	28	30	36
A1	in.	11-1/2	13	14	17	20	22	26	31	33	35	39	43	47	55	57	61	65	82
A2	in.	11-5/8	13-1/8	14-1/8	17-1/8	20-1/8	22-1/8	26-1/8	31-1/8	33-1/8	35-1/8	39-1/8	43-1/8	47-1/4	55-3/8	-	-	-	-
A3	in.	11-1/2	13	14	17	20	22	26	31	33	35	39	43	47	55	57	61	65	82
H	in.	17-3/8	19-1/4	20-7/8	25-3/4	33-3/4	41	49-1/4	60-1/4	70-1/4	73-1/4	84-7/8	94-1/2	96-7/8	118-5/8	127-1/4	140-1/4	152-3/4	179-1/2
W	in.	7-7/8	9-7/8	9-7/8	11-13/16	15-3/4	19-11/16	22-1/16	27-3/16	24	24	24	24	24	30	30	30	24	24
L	in.	-	-	-	-	-	-	-	17	17	20-3/16	20-3/16	20-3/16	21-13/16	21-13/16	21-13/16	21-13/16	20-3/16	20-3/16
Weight (Approx.)	lb	110	132	187	298	573	760	1136	1863	2470	2999	4212	5149	5954	9812	11510	13340	15314	22050
	Kg	50	60	85	135	260	345	515	845	1120	1360	1910	2335	2700	4450	5220	6050	6945	10000
	lb	77	99	143	232	463	584	838	1543	2040	2734	3484	4190	4741	8070	9470	10981	12591	18125
	Kg	35	45	65	105	210	265	380	700	925	1240	1580	1900	2150	3660	4295	4980	5710	8220

ANSI 300 CAST STEEL GATE VALVE

BOLTED BONNET O.S. & Y.

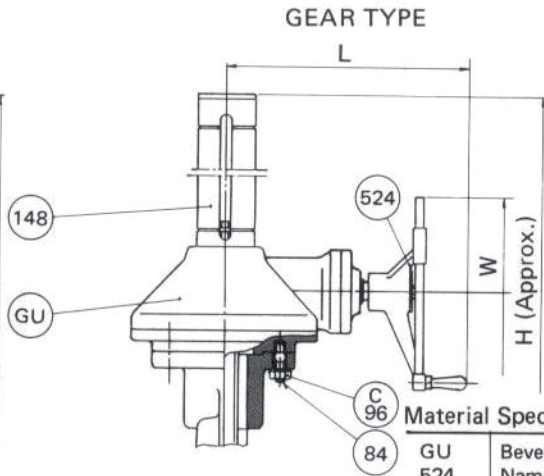
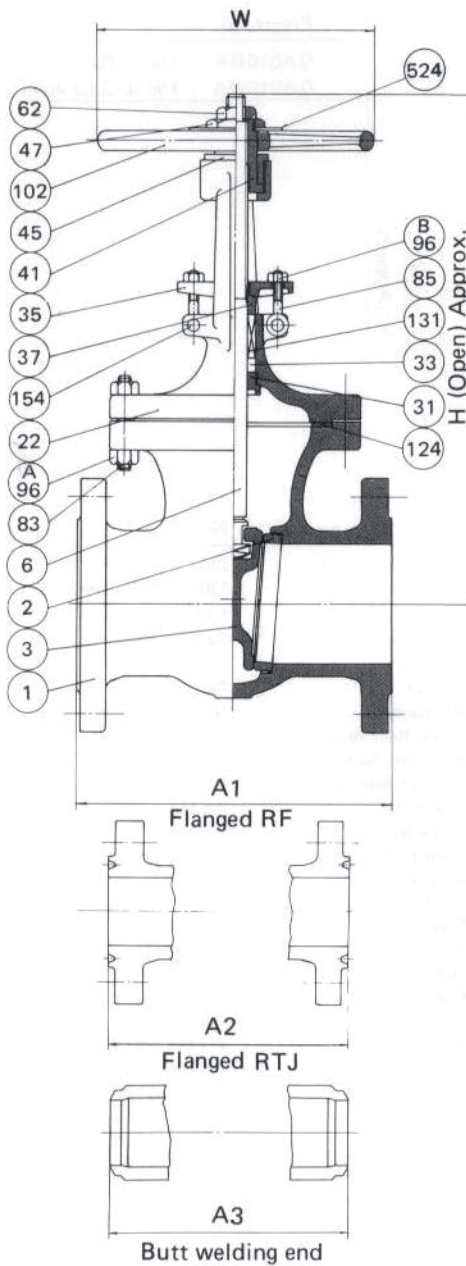


Figure No.

GA030RA	300 lb Gate RF
GA030JA	300 lb Gate RTJ
GA030WA	300 lb Gate Weld

■ Features

- End to end dimensions and Wall thicknesses conform to ANSI and API specifications.
- 8 in. and smaller Valves have a one piece Bonnet and Yoke design.
- 10 in. and larger Valves have a two piece Bonnet and Yoke design.
- 4 in. and smaller Valves have a plain solid Wedge.
- 5 in. and larger Valves have a one piece flexible Wedge.
- Gear operator can be furnished upon request.
- Flange dimension;
24 in. and smaller Valves conform to ANSI B16.5.
26 in. and larger Valves conform to API 605.

Material Specifications Trim No. 8

NO.	PART NAME	MATERIAL
GU	Bevel Gear Unit	Cast Iron + etc.
524	Name Plate	18Cr-8Ni S. Steel
154	Eye Bolt Pin	13% Cr. S. Steel
148	Stem Cap	Carbon Steel
131	Packing	*3
124	Gasket	*2
102	Handwheel	Nodular Iron
96C	Yoke Bolt Nut	ASTM A194 Gr. 2H
96B	Eye Bolt Nut	ASTM A194 Gr. 2H
96A	Bonnet Bolt Nut	ASTM A194 Gr. 2H
85	Eye Bolt	ASTM A193 Gr. B7
84	Yoke Bolt	ASTM A193 Gr. B7
83	Bonnet Bolt	ASTM A193 Gr. B7
62	Stopper	Carbon Steel
47	Lock Nut	Carbon Steel
45	Sleeve Nut	Carbon Steel
41	Yoke Sleeve	Al-Bronze
37	Gland	ASTM A182 Gr. F6a
35	Gland Flange	Carbon Steel
33	Packing Washer	ASTM A182 Gr. F6a
31	Bonnet Bush	ASTM A182 Gr. F6a
22	Bonnet Yoke	ASTM A216 Gr. WCB
6	Stem	ASTM A182 Gr. F6a
3	Wedge	ASTM A182 Gr. F6a *1
2	Body Seat Ring	ASTM A105 + STL
1	Body	ASTM A216 Gr. WCB

- Note *1 6 in. & 8 in. ASTM A217 Gr. CA15
10 in. & larger ASTM A216 Gr. WCB + 13% Cr. deposit
- *2 Spiral wound 304 s. steel asbestos filled
- *3 Inconel wire reinforced asbestos braided packing

Dimensions (in./mm)

Nom Size	in.	2	2-1/2	3	4	5	6	8	10	12	14	16	18	20	24	26	28	30	36	40	42	48
A1	in.	8-1/2	9-1/2	11-1/8	12	15	15-7/8	16-1/2	18	19-3/4	30	33	36	39	45	49	53	55	68	76	78	88
A2	in.	9-1/8	10-1/8	11-3/4	12-5/8	15-5/8	16-1/2	17-1/8	18-5/8	20-3/8	30-5/8	33-5/8	36-5/8	39-3/4	45-7/8	50	54	56	69-1/8	-	-	-
A3	in.	8-1/2	9-1/2	11-1/8	12	15	15-7/8	16-1/2	18	19-3/4	30	33	36	39	45	49	53	55	68	76	78	88
H	in.	16-1/4	18-3/4	19-7/8	23-3/4	30-3/4	31-7/8	40-3/8	49-1/4	57	66-7/8	80-1/8	89-5/8	96-3/4	112-7/8	126	130	148-1/2	169-3/4	188-5/8	198-1/8	217-3/8
W	in.	7-7/8	7-7/8	9-7/8	9-7/8	11-13/16	14	15-3/4	19-11/16	22-1/16	18-1/8	24	24	24	24	24	30	30	30	24	24	24
L	in.	-	-	-	-	-	-	-	-	16-13/16	17	17	17	17	20-3/16	20-3/16	21-13/16	21-13/16	21-13/16	20-3/16	20-3/16	20-3/16
RF	lb	62	88	104	154	265	287	430	772	1069	1588	2536	3164	4289	5843	6946	8070	9592	15104	18654	20948	27342
RTJ	lb	28	40	47	70	120	130	195	350	485	720	1150	1435	1945	2650	3150	3660	4350	6850	8460	9500	12400
BW	lb	51	77	70	132	221	234	324	562	838	1477	2205	2602	3638	4851	5711	6637	7629	11003	13583	14994	19845
	Kg	23	35	36	60	100	106	147	255	380	670	1000	1180	1650	2200	2590	3010	3460	4990	6160	6800	9000

ANSI 150 CAST STEEL GATE VALVE

BOLTED BONNET O.S.&Y.

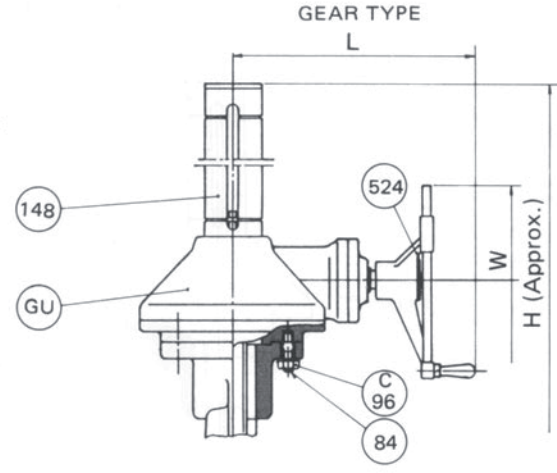
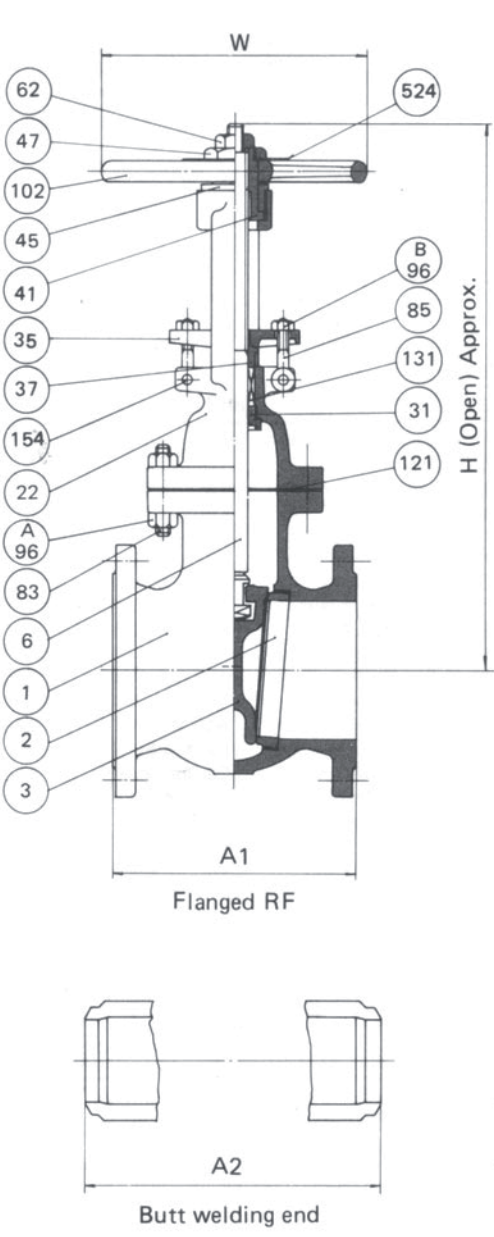


Figure No.	
GA010RA	150 lb Gate RF
GA010WA	150 lb Gate Weld

1
BOLTED BONNET GATE VALVES

- Features
- End to end dimensions and Wall thicknesses conform to ANSI and API specifications.
 - 8 in. and smaller Valves have a one piece Bonnet and Yoke design.
 - 10 in. and larger Valves have a two piece Bonnet and Yoke design.
 - 4 in. and smaller Valves have a plain solid Wedge.
 - 5 in. and larger Valves have a one piece flexible Wedge.
 - 2 in. Valves have a square Bonnet flange.
 - 2-1/2 in. and larger Valves have an oval type Bonnet flange.
 - Gear operator can be furnished upon request.
 - Flange dimensions; 24 in. and smaller Valves conform to ANSI B16.5. 26 in. and larger Valves conform to API 605.

Material Specifications Trim No. 8		
NO.	PART NAME	MATERIAL
GU	Bevel Gear Unit	Cast Iron + etc
524	Name Plate	18Cr-8Ni S. Steel
154	Eye Bolt Pin	13% Cr. S. Steel
148	Stem Cap	Carbon Steel
131	Packing	*3
121	Gasket	*2
102	Handwheel	Nodular Iron
96C	Yoke Bolt Nut	ASTM A194 Gr.2H
96B	Eye Bolt Nut	ASTM A194 Gr.2H
96A	Bonnet Bolt Nut	ASTM A194 Gr.2H
85	Eye Bolt	ASTM A193 Gr.B7
84	Yoke Bolt	ASTM A193 Gr.B7
83	Bonnet Bolt	ASTM A193 Gr.B7
62	Stopper	Carbon Steel
47	Lock Nut	Carbon Steel
45	Sleeve Nut	Carbon Steel
41	Yoke Sleeve	Al-Bronze
37	Gland	ASTM A182 Gr.F6a
35	Gland Flange	Carbon Steel
31	Bonnet Bush	ASTM A182 Gr.F6a
22	Bonnet Yoke	ASTM A216 Gr.WCB
6	Stem	ASTM A182 Gr.F6a
3	Wedge	ASTM A182 Gr.F6a *1
2	Body Seat Ring	ASTM A105 + STL
1	Body	ASTM A216 Gr.WCB

Note *1 6 in. & 8 in. ASTM A217 Gr. CA15
10 in. & larger ASTM A216 Gr. WCB + 13% Cr. deposit
*2 Compressed asbestos or Corrugated metal
*3 Inconel wire reinforced asbestos braided packing

Dimensions (in./mm)

Nom Size	in.	mm	2	2-1/2	3	4	5	6	8	10	12	14	16	18	20	24	26	28	30	36	40	42	48	
			in.	mm	in.	mm	in.	mm	in.	mm	in.	mm	in.	mm	in.	mm	in.	mm	in.	mm	in.	mm	in.	mm
A1	7	7-1/2	8	9	10	10-1/2	11-1/2	13	14	15	16	17	18	20	22	24	24	24	24	28	30	31	34	
A2	8-1/2	9-1/2	11-1/8	12	15	15-7/8	16-1/2	18	19-3/4	22-1/2	24	26	28	32	34	36	36	36	36	40	42	43	46	
H	14-7/8	17-1/2	18-3/4	22-3/4	27-5/8	30-3/8	38	47-1/4	55	60-1/8	68-1/2	81-3/4	89-3/8	105	119-3/8	122-7/8	131-5/8	131-5/8	164-1/4	183-7/8	193-3/4	217-1/2		
W	7-7/8	7-7/8	9-7/8	9-7/8	11-13/16	11-13/16	14	15-3/4	19-11/16	22-1/16	23-5/8	18-1/8	18-1/8	24	24	24	24	24	24	30	30	30		
L	17	17	17	17	17	17	17	17	17	17	17	17	17	17	17	17	17	17	17	17	17	17		
RF	37	66	75	106	143	170	265	441	639	816	1036	1323	1654	2040	4190	4631	4410	4410	8489	10617	11687	15678		
BW	33	57	62	93	121	143	221	406	584	750	970	1213	1566	1918	4289	4763	4476	4476	8644	10672	11631	15545		
Weight (Approx.)	lb	Kg	lb	Kg	lb	Kg	lb	Kg	lb	Kg	lb	Kg	lb	Kg	lb	Kg	lb	Kg	lb	Kg	lb	Kg	lb	Kg