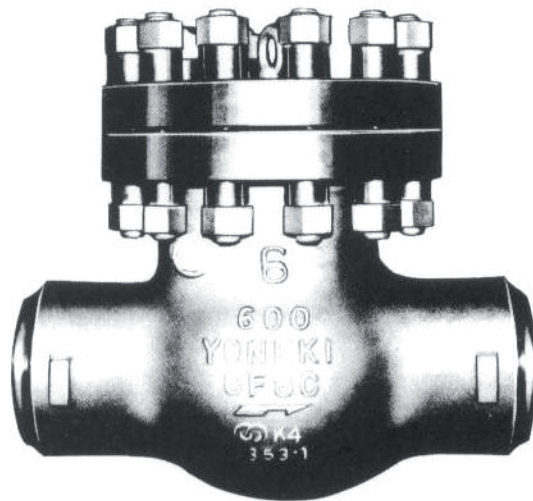


SWING CHECK VALVES

**CLASS 150-300-600-
900-1500-2500**

FLANGED ENDS
BUTT WELDING ENDS

BOLTED COVER



ANSI 150 CAST STEEL SWING CHECK VALVE BOLTED COVER

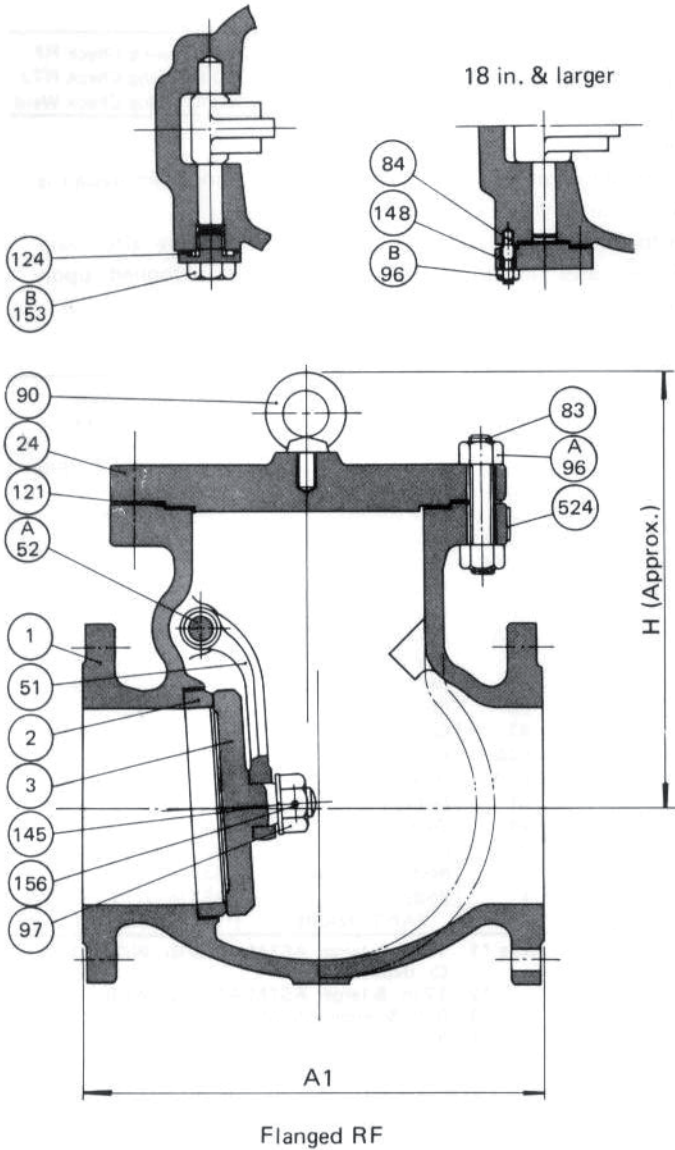


Figure No.

SC010RA	150 lb Swing Check RF
SC010WA	150 lb Swing Check Weld

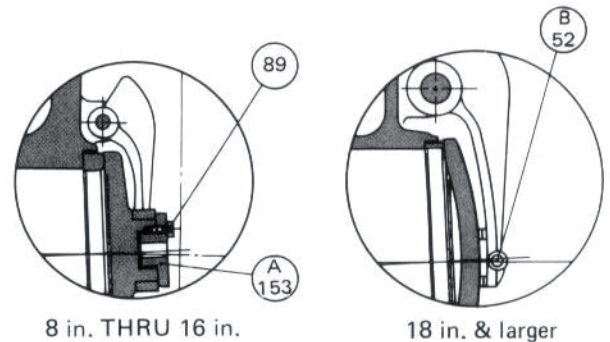
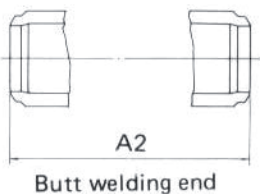
■ Features

- End to end dimensions and Wall thicknesses conform to ANSI and API specifications.
- Flange dimensions; 24 in. and smaller Valves conform to ANSI B16.5.
- 26 in. and larger Valves conform to API 605.
- Internal Hinge pin design is available.
- Lift check valve also available. Data supplied upon request.

Material Specifications Trim No. 8

No.	PART NAME	MATERIAL
524	Name Plate	18Cr-8Ni S. Steel
156	Knock Pin	18Cr-8Ni S. Steel
153B	Hinge Pin Plug	ASTM A105
153A	Disc Plug	ASTM A182 Gr.F6a
148	Hinge Pin Cover	ASTM A105
145	Disc Washer	18Cr-8Ni S. Steel
124	Hinge Pin Gasket	*6
121	Cover Gasket	*5
97	Disc Nut	18Cr-8Ni S. Steel
96B	Cover Bolt Nut	ASTM A194 Gr.2H
96A	Cover Bolt Nut	ASTM A194 Gr.2H
90	Eye Bolt	Carbon Steel *4
89	Set Bolt	18Cr-8Ni S. Steel
84	Cover Bolt	ASTM A193 Gr.B7
83	Cover Bolt	ASTM A193 Gr.B7
52B	Hinge Pin	ASTM A182 Gr.F6a
52A	Hinge Pin	ASTM A182 Gr.F6a
51	Swing Lever	ASTM A105 *3
24	Cover	ASTM A105 *2
3	Disc	ASTM A182 Gr.F6a *1
2	Body Seat Ring	ASTM A105 + STL
1	Body	ASTM A216 Gr.WCB

- Note *1 14 in. & larger ASTM A216 Gr.WCB + 13% Cr. deposit
 *2 12 in. & larger ASTM A216 Gr.WCB
 *3 8 in. & larger ASTM A216 Gr.WCB
 *4 6 in. & larger
 *5 Compressed asbestos or Corrugated metal
 *6 Spiral wound 304 s. steel asbestos filled

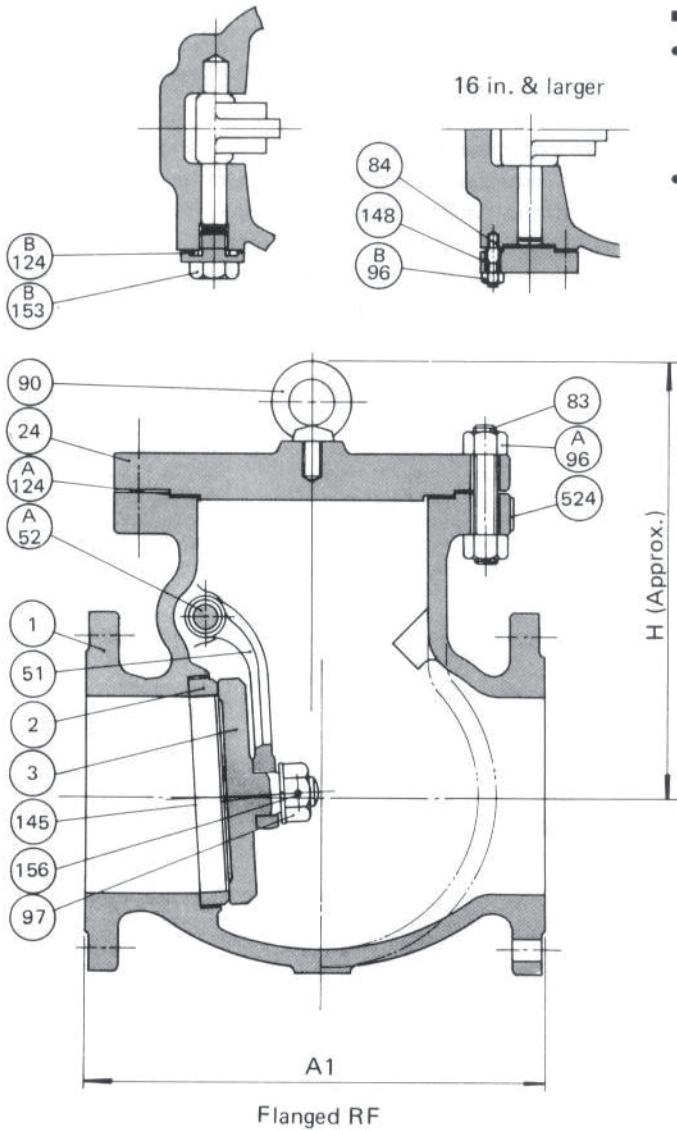


Dimensions (in./mm)

Nom. Size	in.	2	2-1/2	3	4	5	6	8	10	12	14	16	18	20	24	26	28	30	36
		mm	50	65	80	100	125	150	200	250	300	350	400	450	500	600	650	700	750
A1	in.	8	8-1/2	9-1/2	11-1/2	13	14	19-1/2	24-1/2	27-1/2	31	34	38-1/2	38-1/2	51	51	57	60	77
	mm	203	216	241	292	330	356	495	622	698	787	864	978	978	1295	1295	1448	1524	1956
A2	in.	8	8-1/2	9-1/2	11-1/2	13	14	19-1/2	24-1/2	27-1/2	31	34	38-1/2	38-1/2	51	51	57	60	77
	mm	203	216	241	292	330	356	495	622	698	787	864	978	978	1295	1295	1448	1524	1956
H	in.	6-7/8	7	7-1/2	8-5/8	9-1/4	12-3/4	15-1/8	17-5/8	21-1/4	22	24-5/8	25-5/8	26-5/8	34-5/8	37-3/8	41	45-1/4	53-1/8
	mm	175	178	191	219	235	324	384	448	540	559	626	651	676	880	949	1041	1149	1349
Weight (Approx.) RF	lb	44	53	77	121	185	211	353	540	761	1125	1455	1874	2315	3197	3859	4520	5182	7387
	Kg	20	24	35	55	84	96	160	245	345	510	660	850	1050	1450	1750	2050	2350	3350
Weight (Approx.) BW	lb	31	37	57	82	115	176	293	470	648	970	1252	1654	2029	2800	3638	4300	4961	6946
	Kg	14	17	26	37	52	80	133	213	294	440	568	750	920	1270	1650	1950	2250	3150

6
BOLTED COVER SWING CHECK VALVES

ANSI 300 CAST STEEL SWING CHECK VALVE BOLTED COVER



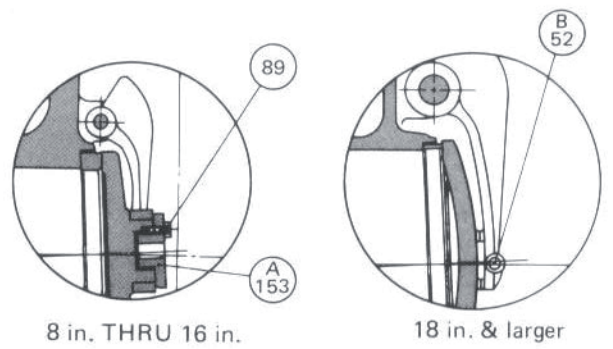
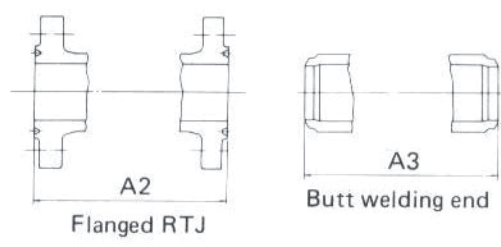
- Features
- End to end dimensions and Wall thickness conform to ANSI and API specifications.
- Flange dimensions; 24 in. and smaller Valves conform to ANSI B16.5. 26 in. and larger Valves conform to API 605.

Figure No.	
SC030RA	300 lb Swing Check RF
SC030 JA	300 lb Swing Check RTJ
SC030WA	300 lb Swing Check Weld

- Internal Hinge pin design is available.
- Lift check valve also available. Data supplied upon request.

Material Specifications	Trim No. 8	
524	Name Plate	18Cr-8Ni S. Steel
156	Knock Pin	18Cr-8Ni S. Steel
153B	Hinge Pin Plug	ASTM A105
153A	Disc Plug	ASTM A182 Gr. F6a
148	Hinge Pin Cover	ASTM A105
145	Disc Washer	18Cr-8Ni S. Steel
124B	Hinge Pin Gasket	*5
124A	Cover Gasket	*5
97	Disc Nut	18Cr-8Ni S. Steel
96B	Cover Bolt Nut	ASTM A194 Gr.2H
96A	Cover Bolt Nut	ASTM A194 Gr.2H
90	Eye Bolt	Carbon Steel *4
89	Set Bolt	18Cr-8Ni S. Steel
84	Cover Bolt	ASTM A193 Gr. B7
83	Cover Bolt	ASTM A193 Gr. B7
52B	Hinge Pin	ASTM A182 Gr. F6a
52A	Hinge Pin	ASTM A182 Gr. F6a
51	Swing Lever	ASTM A105 *3
24	Cover	ASTM A105 *2
3	Disc	ASTM A182 Gr. F6a*1
2	Body Seat Ring	ASTM A105 + STL
1	Body	ASTM A216 Gr. WCB
NO	PART NAME	MATERIAL

- Note *1 14 in. & larger ASTM A216 Gr. WCB + 13% Cr. deposit
 *2 12 in. & larger ASTM A216 Gr. WCB
 *3 8 in. & larger ASTM A216 Gr. WCB
 *4 4 in. & larger
 *5 Spiral wound 304 s. steel asbestos filled

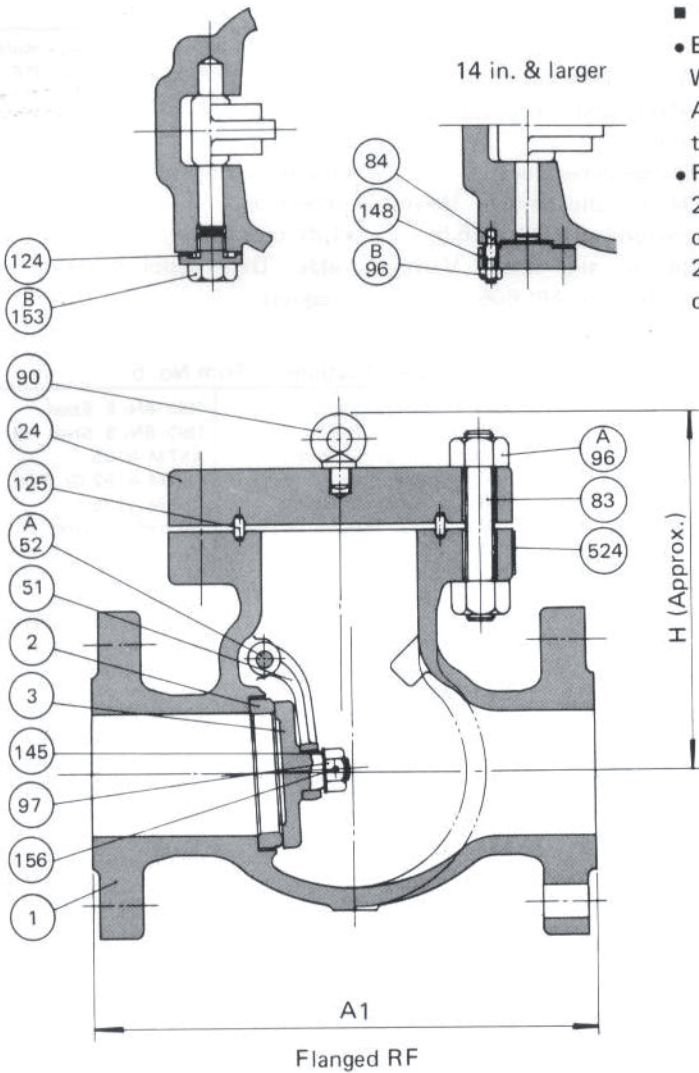


Dimensions (in./mm)

Nom. Size	in.	mm	2	2-1/2	3	4	5	6	8	10	12	14	16	18	20	24	26	28	30	36
			in.	10-1/2	11-1/2	12-1/2	14	15-3/4	17-1/2	21	24-1/2	28	33	34	38-1/2	40	53	53	59	62-3/4
mm	267	292	318	356	400	444	533	622	711	838	864	978	1016	1346	1346	1499	1594	2083		
A2	in.	11-1/8	12-1/8	13-1/8	14-5/8	16-3/8	18-1/8	21-5/8	25-1/8	28-5/8	33-5/8	34-5/8	39-1/8	40-3/4	53-7/8	54	60	63-3/4	83	
mm	283	308	333	371	416	460	549	638	727	854	880	994	1035	1368	1372	1524	1619	2108		
A3	in.	10-1/2	11-1/2	12-1/2	14	15-3/4	17-1/2	21	24-1/2	28	33	34	38-1/2	40	53	53	59	62-3/4	82	
mm	267	292	318	356	400	444	533	622	711	838	864	978	1016	1346	1346	1499	1594	2083		
H	in.	7-3/4	8	8-3/4	10-7/8	11-5/8	13-1/4	16-1/4	18-1/4	22-1/8	23-1/2	25-3/8	29-7/8	33-5/8	37	41-3/8	45-1/4	50	60-5/8	
mm	197	203	222	276	295	337	413	464	562	597	645	759	854	940	1051	1149	1270	1540		
Weight (Approx.)	RF	lb	77	82	132	181	243	342	591	838	1091	1566	2095	2646	2977	4851	5513	6174	7497	11025
	Kg	35	37	60	82	110	155	268	380	495	710	950	1200	1350	2200	2500	2800	3400	5000	
BW	lb	71	77	110	143	154	282	507	595	1014	1224	1764	2139	2359	3925	4675	5292	6505	9482	
	Kg	32	35	50	65	70	128	230	270	460	555	800	970	1070	1780	2120	2400	2950	4300	

ANSI 600 CAST STEEL SWING CHECK VALVE

BOLTED COVER



■ Features

- End to end dimensions and Wall thicknesses conform to ANSI and API specifications.
- Flange dimensions ;
24 in. and smaller Valves conform to ANSI B16.5.
26 in. and larger Valves conform to API 605.

Figure No.

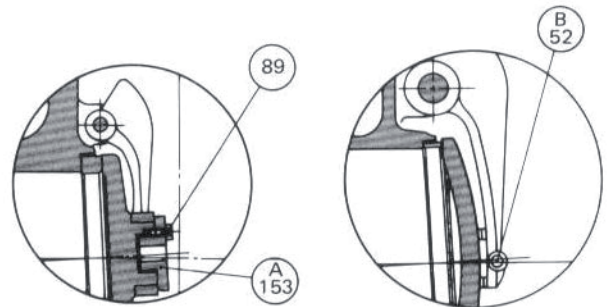
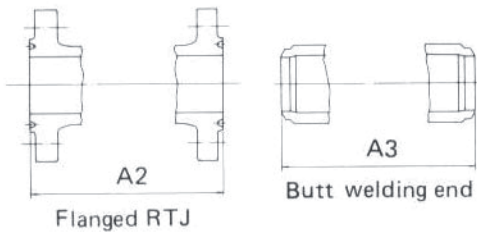
SC060 RA	600 lb Swing Check RF
SC060 JA	600 lb Swing Check RTJ
SC060WA	600 lb Swing Check Weld

- Internal Hinge pin design is available.
- Lift check valve also available. Data supplied upon request.

Material Specifications Trim No. 8

NO.	PART NAME	MATERIAL
524	Name Plate	18Cr-8Ni S. Steel
156	Knock Pin	18Cr-8Ni S. Steel
153B	Hinge Pin Plug	ASTM A105
153A	Disc Plug	ASTM A182 Gr. F6a
148	Hinge Pin Cover	ASTM A105
145	Disc Washer	18 Cr-8Ni S. Steel
125	Cover Gasket	*6
124	Hinge Pin Gasket	*5
97	Disc Nut	18Cr-8Ni S. Steel
96B	Cover Bolt Nut	ASTM A194 Gr. 2H
96A	Cover Bolt Nut	ASTM A194 Gr. 2H
90	Eye Bolt	Carbon Steel *4
89	Set Bolt	18Cr-8Ni S. Steel
84	Cover Bolt	ASTM A193 Gr. B7
83	Cover Bolt	ASTM A193 Gr. B7
52B	Hinge Pin	ASTM A182 Gr. F6a
52A	Hinge Pin	ASTM A182 Gr. F6a
51	Swing Lever	ASTM A105 *3
24	Cover	ASTM A105 *2
3	Disc	ASTM A182 Gr. F6a*1
2	Body Seat Ring	ASTM A105 + STL
1	Body	ASTM A216 Gr. WCB

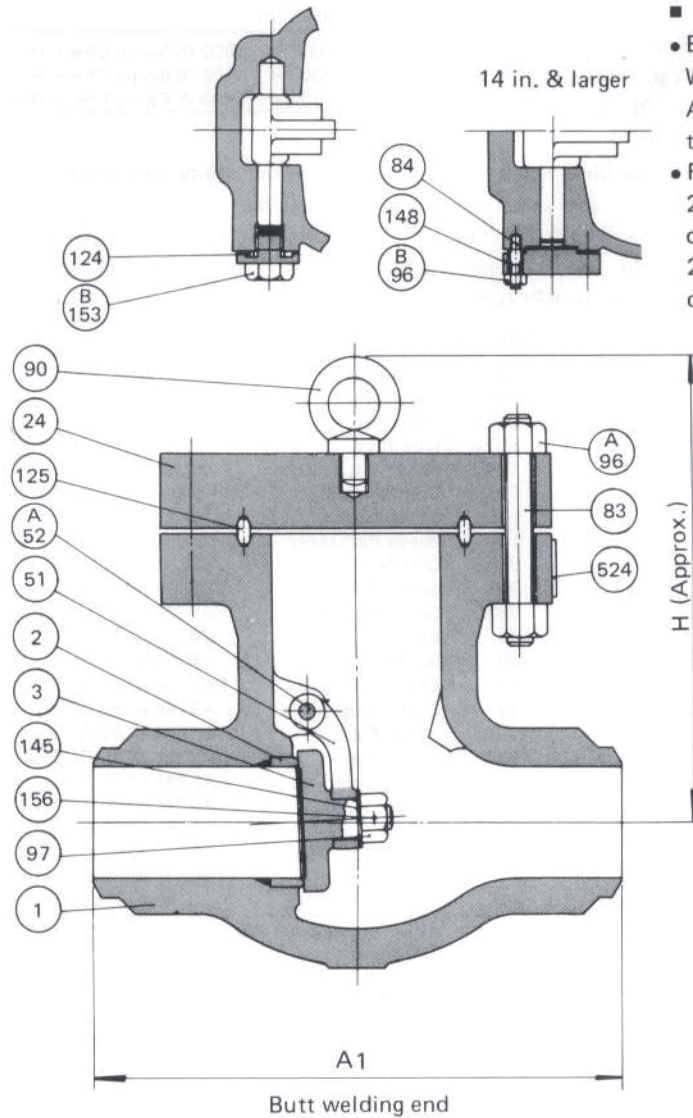
- Note *1 14 in. & larger ASTM A216 Gr.WCB + 13% Cr. deposit
 *2 12 in. & larger ASTM A216 Gr. WCB
 *3 8 in. & larger ASTM A216 Gr. WCB
 *4 3 in. & larger
 *5 Spiral wound 304 s. steel asbestos filled
 *6 Soft iron ring joint gasket



Dimensions (in./mm)

Nom. Size	in.	2	2-1/2	3	4	5	6	8	10	12	14	16	18	20	24	26	28	30	
A1	in.	11-1/2	13	14	17	20	22	26	31	33	35	39	43	47	55	57	63	65	
A1	mm	292	330	356	432	508	559	660	787	838	889	991	1092	1194	1397	1448	1600	1651	
A2	in.	11-5/8	13-1/8	14-1/8	17-1/8	20-1/8	22-1/8	26-1/8	31-1/8	33-1/8	35-1/8	39-1/8	43-1/8	47-1/4	55-3/8	57-1/2	63-1/2	65-1/2	
A2	mm	295	333	359	435	511	562	664	791	841	892	994	1095	1200	1407	1461	1613	1664	
A3	in.	11-1/2	13	14	17	20	22	26	31	33	35	39	43	47	55	57	63	65	
A3	mm	292	330	356	432	508	559	660	787	838	889	991	1092	1194	1397	1448	1600	1651	
H	in.	8-1/4	8-5/8	10-1/2	11-3/4	13-1/4	15	18-3/4	21-5/8	22-5/8	26-3/8	30-1/8	35-1/4	38-3/8	43-3/4	48	53-1/8	56-1/4	
H	mm	210	219	267	299	337	381	476	549	575	670	765	895	975	1111	1219	1349	1429	
Weight (Approx.)	RF	lb	88	121	159	265	386	595	926	1367	1786	2426	3197	3969	4631	6615	7718	9041	11025
	RF	Kg	40	55	72	120	175	270	420	620	810	1100	1450	1800	2100	3000	3500	4100	5000
Weight (Approx.)	BW	lb	68	99	132	187	276	496	805	1103	1577	1940	2514	3197	3638	5072	6615	7718	9482
	BW	Kg	31	45	60	85	125	225	365	500	715	880	1140	1450	1650	2300	3000	3500	4300

ANSI 900 CAST STEEL SWING CHECK VALVE BOLTED COVER



■ Features

- End to end dimensions and Wall thicknesses conform to ANSI and API specifications.
- Flange dimensions; 24 in. and smaller Valves conform to ANSI B16.5. 26 in. and larger Valves conform to API 605.

Figure No.

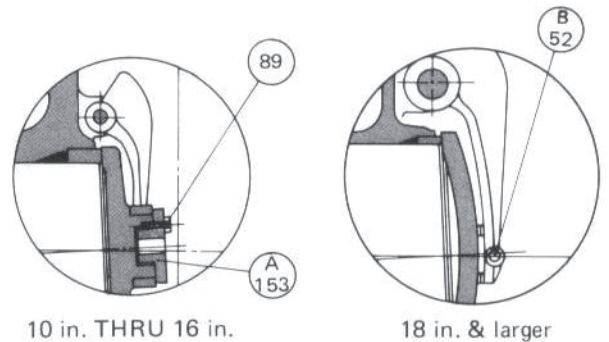
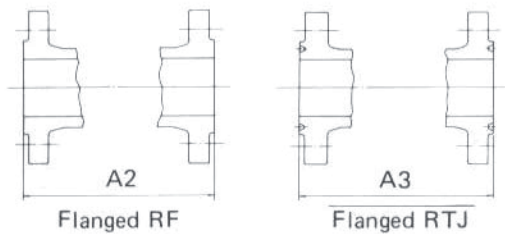
SC090WC	900 lb Swing Check Weld
SC090RC	900 lb Swing Check RF
SC090JC	900 lb Swing Check RTJ

- Internal Hinge pin design is available.
- Lift check valve also available. Data supplied upon request.

Material Specifications Trim No. 5

NO.	PART NAME	MATERIAL
524	Name Plate	18Cr-8Ni S. Steel
156	Knock Pin	18Cr-8Ni S. Steel
153B	Hinge Pin Plug	ASTM A105
153A	Disc Plug	ASTM A182 Gr. F6a
148	Hinge Pin Cover	ASTM A105
145	Disc Washer	18Cr-8Ni S. Steel
125	Cover Gasket	*5
124	Hinge Pin Gasket	*4
97	Disc Nut	18Cr-8Ni S. Steel
96B	Cover Bolt Nut	ASTM A194 Gr. 2H
96A	Cover Bolt Nut	ASTM A194 Gr. 2H
90	Eye Bolt	Carbon Steel
89	Set Bolt	18Cr-8Ni S. Steel
84	Cover Bolt	ASTM A193 Gr. B7
83	Cover Bolt	ASTM A193 Gr. B7
52B	Hinge Pin	ASTM A182 Gr. F6a
52A	Hinge Pin	ASTM A182 Gr. F6a
51	Swing Lever	ASTM A105 *3
24	Cover	ASTM A105 *2
3	Disc	ASTM A105 + STL *1
2	Body Seat Ring	ASTM A105 + STL
1	Body	ASTM A216 Gr. WCB

- Note
- *1 14 in. & larger ASTM A216 Gr. WCB + STL
 - *2 14 in. & larger ASTM A216 Gr. WCB
 - *3 3 in. & larger ASTM A216 Gr. WCB
 - *4 Spiral wound 304 s. steel asbestos filled
 - *5 Soft iron ring joint gasket



Dimensions (in./mm)

Nom. Size	2		2-1/2		3		4		5		6		8		10		12		14		16		18		20		24		26		28		30	
	in.	mm	in.	mm	in.	mm	in.	mm	in.	mm	in.	mm	in.	mm	in.	mm	in.	mm	in.	mm	in.	mm	in.	mm	in.	mm	in.	mm	in.	mm	in.	mm		
A1	in.	14-1/2	16-1/2	15	18	22	24	29	33	38	40-1/2	44-1/2	48	52	61	65	69	73	83	96.5	102.9	113.0	121.9	132.1	154.9	165.1	175.3	185.4						
	mm	368	419	381	457	559	610	737	838	965	1029	1130	1219	1321	1549	1651	1753	1854																
A2	in.	14-1/2	16-1/2	15	18	22	24	29	33	38	40-1/2	44-1/2	48	52	61	65	69	73	83	96.5	102.9	113.0	121.9	132.1	154.9	165.1	175.3	185.4						
	mm	368	419	381	457	559	610	737	838	965	1029	1130	1219	1321	1549	1651	1753	1854																
A3	in.	14-5/8	16-5/8	15-1/8	18-1/8	22-1/8	24-1/8	29-1/8	33-1/8	38-1/8	40-7/8	44-7/8	48-1/2	52-1/2	61-3/4	65-7/8	69-7/8	73-7/8	84	96.8	103.8	114.0	123.2	133.3	156.8	167.3	177.5	187.6						
	mm	371	422	384	460	562	613	740	841	968	1038	1140	1232	1333	1568	1673	1775	1876																
H	in.	12-5/8	13-3/4	12-5/8	16	17-3/8	18-7/8	22-1/4	26-1/8	30-1/2	28-7/8	33	36-1/4	41-3/8	47-1/4	50-3/4	55-1/8	61-3/4	66	77.5	83.8	92.1	105.1	120.0	128.9	140.0	156.9							
	mm	321	349	321	406	441	479	565	664	775	733	838	921	1051	1200	1289	1400	1569																
RF	lb	154	243	243	441	662	838	1433	2536	3197	3859	5336	7166	8820	12789	14994	17309	19955																
	Kg	70	110	110	200	300	380	650	1150	1450	1750	2420	3250	4000	5800	6800	7850	9050																
BW	lb	110	192	187	353	529	662	1147	2095	2602	3197	4520	5953	7277	9923	12789	14663	16868																
	Kg	50	87	85	160	240	300	520	950	1180	1450	2050	2700	3300	4500	5800	6650	7650																

ANSI 1500 CAST STEEL SWING CHECK VALVE

BOLTED COVER

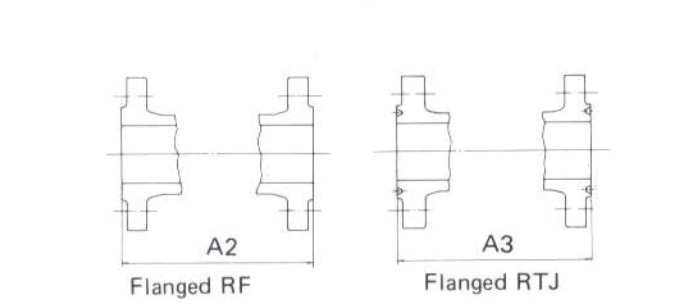
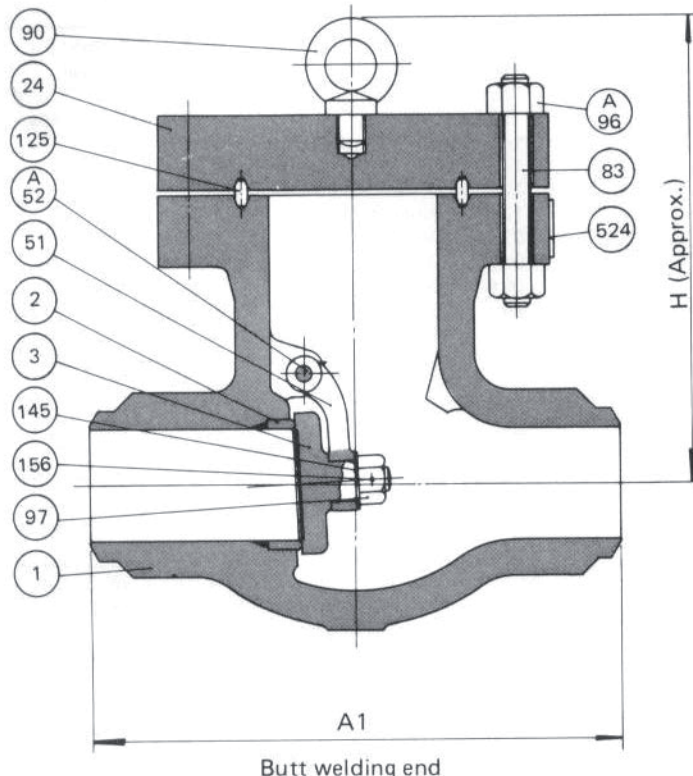
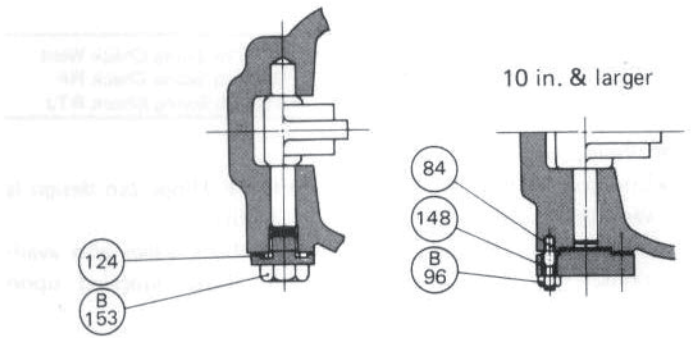
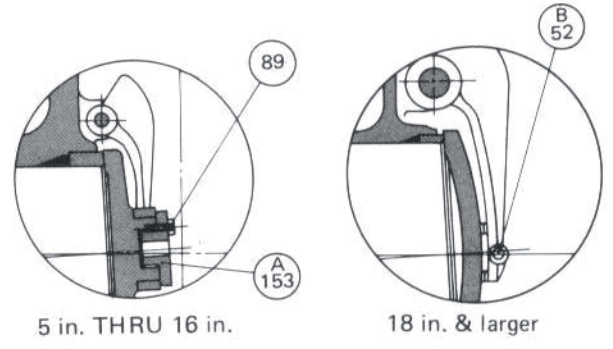


Figure No.	
SC150WC	1500 lb Swing Check Weld
SC150RC	1500 lb Swing Check RF
SC150 JC	1500 lb Swing Check RTJ

- Features
- End to end dimensions and Wall thicknesses conform to ANSI and API specifications.
 - Internal Hinge pin design is available.
 - Lift check valve also available. Data supplied upon request.

Material Specifications	Trim No. 5	
524	Name Plate	18Cr-8Ni S. Steel
156	Knock Pin	18Cr-8Ni S. Steel
153B	Hinge Pin Plug	ASTM A105
153A	Disc Plug	ASTM A182 Gr. F6a
148	Hinge Pin Cover	ASTM A105
145	Disc Washer	18Cr-8Ni S. Steel
125	Cover Gasket	*5
124	Hinge Pin Gasket	*4
97	Disc Nut	18Cr-8Ni S. Steel
96B	Cover Bolt Nut	ASTM A194 Gr. 2H
96A	Cover Bolt Nut	ASTM A194 Gr. 2H
90	Eye Bolt	Carbon Steel
89	Set Bolt	18Cr-8Ni S. Steel
84	Cover Bolt	ASTM A193 Gr. B7
83	Cover Bolt	ASTM A193 Gr. B7
52B	Hinge Pin	ASTM A182 Gr. F6a
52A	Hinge Pin	ASTM A182 Gr. F6a
51	Swing Lever	ASTM A105 *2
24	Cover	ASTM A105 *3
3	Disc	ASTM A105 + STL *1
2	Body Seat Ring	ASTM A105 + STL
1	Body	ASTM A216 Gr. WCB

- NO. PART NAME MATERIAL
- Note *1 14 in. & larger ASTM A216 Gr. WCB + STL
 *2 14 in. & larger ASTM A216 Gr. WCB
 *3 5 in. & larger ASTM A216 Gr. WCB
 *4 Spiral wound 304 s. steel asbestos filled
 *5 Soft iron ring joint gasket



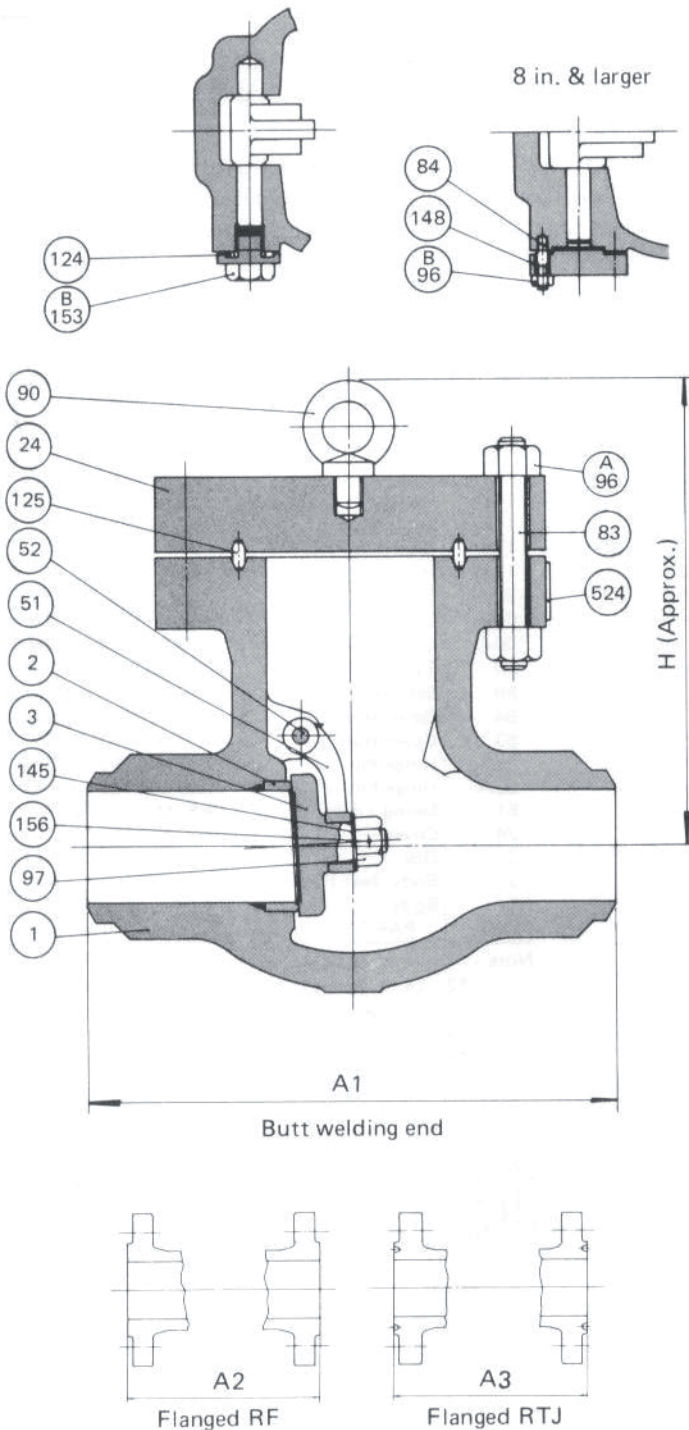
Dimensions (in./mm)		2	3	4	5	6	8	10	12	14	16	18	20	24
Nom. Size	in.	2	2-1/2	3	4	5	6	8	10	12	14	16	18	20
	mm	50	65	80	100	125	150	200	250	300	350	400	450	500
A1	in.	14-1/2	16-1/2	18-1/2	21-1/2	26-1/2	27-3/4	32-3/4	39	44-1/2	49-1/2	54-1/2	60-1/2	65-1/2
	mm	368	419	470	546	673	705	832	991	1130	1257	1384	1537	1664
A2	in.	14-1/2	16-1/2	18-1/2	21-1/2	26-1/2	27-3/4	32-3/4	39	44-1/2	49-1/2	54-1/2	60-1/2	65-1/2
	mm	368	419	470	546	673	705	832	991	1130	1257	1384	1537	1664
A3	in.	14-5/8	16-5/8	18-5/8	21-5/8	26-5/8	28	33-1/8	39-3/8	45-1/8	50-1/4	55-3/8	61-3/8	66-3/8
	mm	371	422	473	549	676	711	841	1000	1146	1276	1407	1559	1686
H	in.	12-5/8	13-3/4	14-3/8	16-1/2	18-7/8	20-1/8	26-3/4	29-3/4	33-3/4	38	42	47-1/8	51-1/8
	mm	321	349	365	419	479	511	680	756	857	965	1067	1197	1299
Weight (Approx.)	RF	154	243	375	662	992	1532	2624	4079	6064	7938	10805	14553	17971
	BW	70	110	170	300	450	695	1190	1850	2750	3600	4900	6600	8150
Weight (Approx.)	RF	110	192	298	540	750	1235	2128	3263	4807	6240	8600	11576	14322
	BW	50	87	135	245	340	560	965	1480	2180	2830	3900	5250	6450

BOLTED COVER SWING CHECK VALVES

ANSI 2500 CAST STEEL SWING CHECK VALVE BOLTED COVER

Figure No.

SC250WC	2500 lb Swing Check Weld
SC250RC	2500 lb Swing Check RF
SC250JC	2500 lb Swing Check RTJ



■ Features

- End to end dimensions and Wall thicknesses conform to ANSI and API specifications.
- Internal Hinge pin design is available.
- Lift check valve also available. Data supplied upon request.

Material Specifications Trim No. 5

NO.	PART NAME	MATERIAL
524	Name Plate	18Cr-8Ni S. Steel
156	Knock Pin	18Cr-8Ni S. Steel
153B	Hinge Pin Plug	ASTM A105
153A	Disc Plug	ASTM A182 Gr. F6a
148	Hinge Pin Cover	ASTM A105
145	Disc Washer	18Cr-8Ni S. Steel
125	Cover Gasket	*5
124	Hinge Pin Gasket	*4
97	Disc Nut	18Cr-8Ni S. Steel
96B	Cover Bolt Nut	ASTM A194 Gr. 2H
96A	Cover Bolt Nut	ASTM A194 Gr. 2H
90	Eye Bolt	Carbon Steel
89	Set Bolt	18Cr-8Ni S. Steel
84	Cover Bolt	ASTM A193 Gr. B7
83	Cover Bolt	ASTM A193 Gr. B7
52	Hinge Pin	ASTM A182 Gr. F6a
51	Swing Lever	ASTM A105*3
24	Cover	ASTM A105*2
3	Disc	ASTM A105 + STL*1
2	Body Seat Ring	ASTM A105 + STL
1	Body	ASTM A216 Gr. WCB

- Note *1 14 in. & larger ASTM A216 Gr. WCB + STL
 *2 14 in. & larger ASTM A216 Gr. WCB
 *3 5 in. & larger ASTM A216 Gr. WCB
 *4 Spiral wound 304 s. steel asbestos filled
 *5 Soft iron ring joint gasket

Dimensions (in./mm)

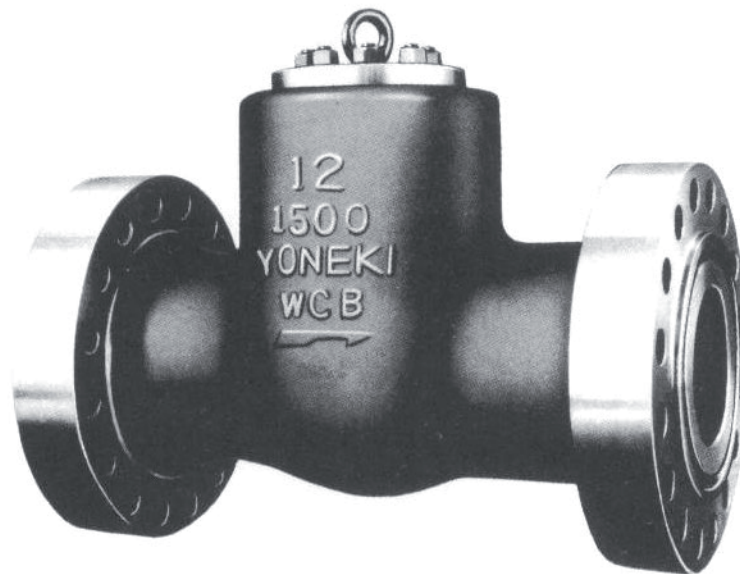
Nom. Size	in.	2	2-1/2	3	4	5	6	8	10	12	14	16
A1	in.	17-3/4	20	22-3/4	26-1/2	31-1/4	36	40-1/4	50	56	62	68
A2	in.	17-3/4	20	22-3/4	26-1/2	31-1/4	36	40-1/4	50	56	-	-
A3	in.	17-7/8	20-1/4	23	26-7/8	31-3/4	36-1/2	40-7/8	50-7/8	56-7/8	-	-
H	in.	16-3/8	16-1/2	17-3/8	18-7/8	19-1/4	20-1/8	28	33-1/2	39-3/8	47-1/4	51-1/8
Weight (Approx.)	RF	331	529	772	1433	2095	3197	5623	8710	12569	-	-
	BW	265	430	617	1191	1698	2646	4851	6946	10033	13671	17861
	Kg	150	240	350	650	950	1450	2550	3950	5700	1200	1299
	Kg	120	195	280	540	770	1200	2200	3150	4550	6200	8100

SWING CHECK VALVES

CLASS 600-900-1500-2500

FLANGED ENDS
BUTT WELDING ENDS

PRESSURE SEAL COVER



ANSI 600 CAST STEEL SWING CHECK VALVE PRESSURE SEAL COVER

■ Features

- End to end dimensions and Wall thicknesses conform to ANSI and API specifications.
- Flange dimensions: 24 in. and smaller Valves conform to ANSI B16.5. 26 in. and larger Valves conform to API 605.
- Lift check valve also available. Data supplied upon request.

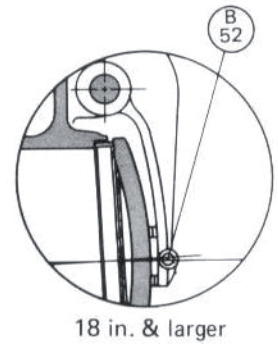
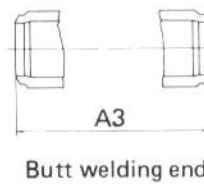
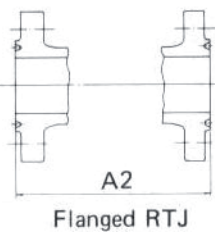
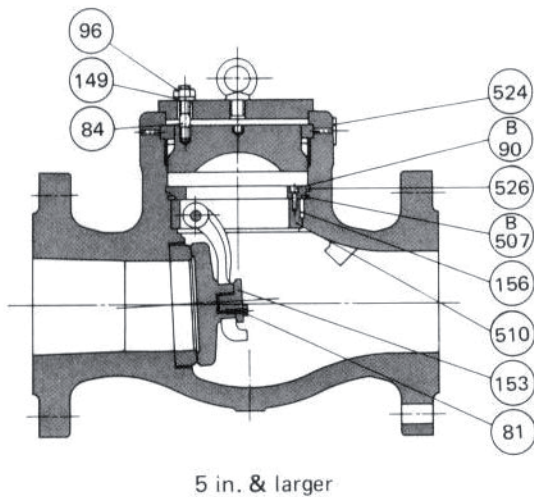
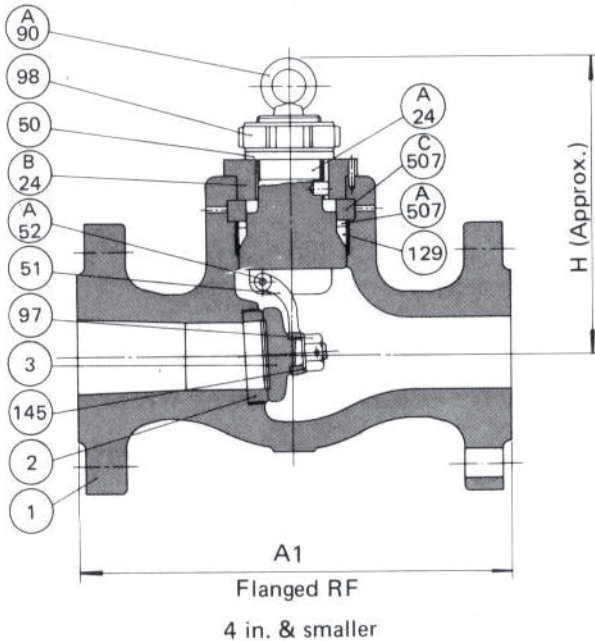


Figure No.

SC064 RA	600 lb Swing Check RF
SC064 J A	600 lb Swing Check RTJ
SC064WA	600 lb Swing Check Weld

Material Specifications Trim No. 8

526	Plate	ASTM A105
524	Name Plate	18Cr-8Ni S. Steel
510	Lever Set Ring	ASTM A216 Gr. WCB
507C	Retainer Ring	ASTM A182 Gr. F6a
507B	Spacer Ring	ASTM A182 Gr. F6a
507A	Spacer Ring	ASTM A182 Gr. F6a
156	Knock Pin	13% Cr. S. Steel
153	Disc Plug	ASTM A182 Gr. F6a
149	Spring Washer	Carbon Steel
145	Disc Washer	18Cr-8Ni S. Steel
129	Gasket	*4
98	Bonnet Nut	13% Cr. S. Steel
97	Disc Nut	18Cr-8Ni S. Steel
96	Stud Bolt Nut	ASTM A194 Gr. 2H
90B	Cap Bolt	18Cr-8Ni S. Steel
90A	Eye Bolt	Carbon Steel
84	Stud Bolt	ASTM A193 Gr. B7
81	Set Bolt	18Cr-8Ni S. Steel
52B	Hinge Pin	ASTM A182 Gr. F6a
52A	Hinge Pin	ASTM A182 Gr. F6a
51	Swing Lever	ASTM A105 *3
50	Washer	13% Cr. S. Steel
24B	Cover Retainer	ASTM A105
24A	Cover	ASTM A105 *2
3	Disc	ASTM A182 Gr. F6a *1
2	Body Seat Ring	ASTM A105 + STL
1	Body	ASTM A216 Gr. WCB

- Note *1 14 in. & larger ASTM A216 Gr. WCB + 13 Cr. deposit
 *2 8 in. & larger ASTM A216 Gr. WCB
 *3 5 in. & larger ASTM A216 Gr. WCB
 *4 Soft iron pressure seal gasket

Dimensions (in./mm)

Nom. Size	in.	2	2-1/2	3	4	5	6	8	10	12	14	16	18	20	24	26	28	30
A1	mm	11-1/2	13	14	17	20	22	26	31	33	35	39	43	47	55	57	63	65
A2	mm	292	330	356	432	508	559	660	787	838	889	991	1092	1194	1397	1448	1600	1651
A3	in.	11-5/8	13-1/8	14-1/8	17-1/8	20-1/8	22-1/8	26-1/8	31-1/8	33-1/8	35-1/8	39-1/8	43-1/8	47-1/4	55-3/8	57-1/2	63-1/2	65-1/2
H	mm	295	333	359	435	511	562	664	791	841	892	994	1095	1200	1407	1461	1613	1664
RF	in.	11-1/2	13	14	17	20	22	26	31	33	35	39	43	47	55	57	63	65
BW	mm	292	330	356	432	508	559	660	787	838	889	991	1092	1194	1397	1448	1600	1651
Weight (Approx.)	lb	60	77	99	187	298	419	772	1103	1477	1940	2536	3263	4145	5733	6836	7718	8820
	Kg	27	35	45	85	135	190	350	500	670	880	1150	1480	1880	2600	3100	3500	4000
	lb	40	55	71	121	187	287	573	816	1080	1455	1874	2426	3285	4498	5513	6174	6946
	Kg	18	25	32	55	85	130	260	370	490	660	850	1100	1490	2040	2500	2800	3150

7
PRESSURE SEAL COVER
SWING CHECK VALVES

ANSI 900 CAST STEEL SWING CHECK VALVE PRESSURE SEAL COVER

■ Features

- End to end dimensions and Wall thicknesses conform to ANSI and API specifications.
- Flange dimensions; 24 in. and smaller Valves conform to ANSI B16.5.
- 26 in. and larger Valves conform to API 605.
- Lift check valve also available. Data supplied upon request.

Figure No.

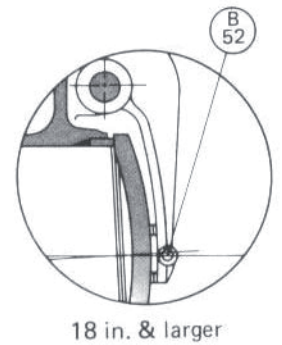
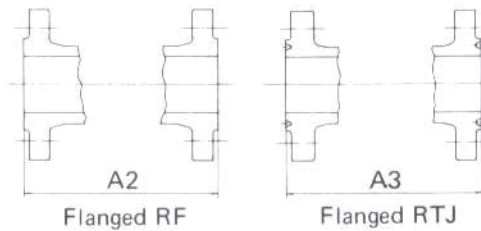
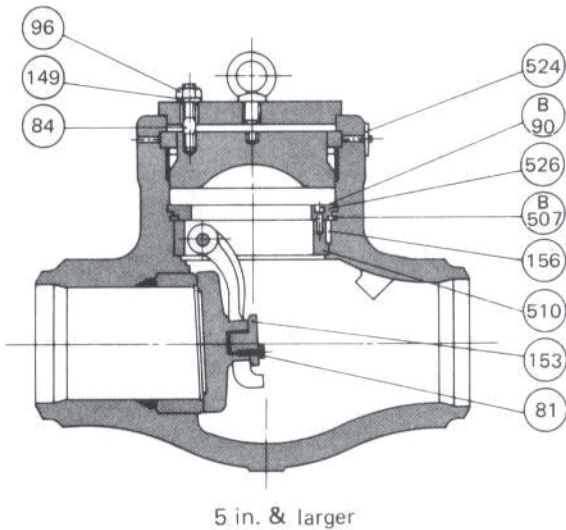
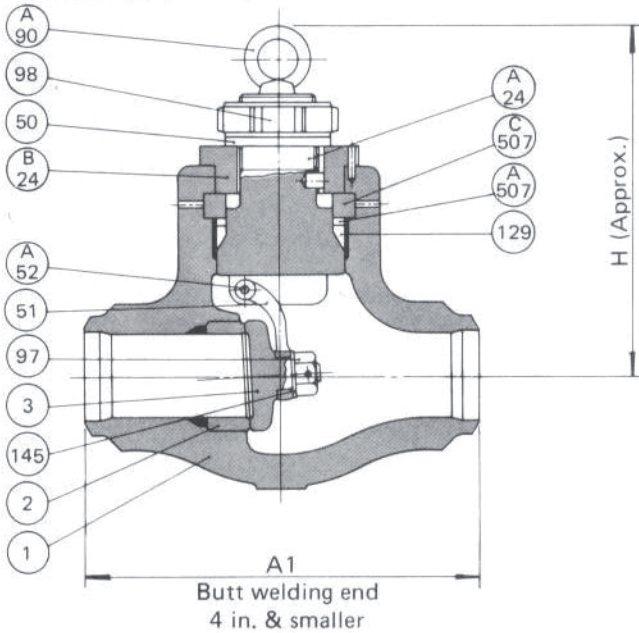
SC094WC	900 lb Swing Check Weld
SC094 RC	900 lb Swing Check RF
SC094 J C	900 lb Swing Check RTJ

Material Specifications

Trim No. 5

526	Plate	ASTM A105
524	Name Plate	18Cr-8Ni S. Steel
510	Lever Set Ring	ASTM A216 Gr. WCB
507C	Retainer Ring	ASTM A182 Gr. F6a
507B	Spacer Ring	ASTM A182 Gr. F6a
507A	Spacer Ring	ASTM A182 Gr. F6a
156	Knock Pin	13% Cr. S. Steel
153	Disc Plug	ASTM A182 Gr. F6a
149	Spring Washer	Carbon Steel
145	Disc Washer	18Cr-8Ni S. Steel
129	Gasket	*4
98	Bonnet Nut	13% Cr. S. Steel
97	Disc Nut	18Cr-8Ni S. Steel
96	Stud Bolt Nut	ASTM A194 Gr. 2H
90B	Cap Bolt	18Cr-8Ni S. Steel
90A	Eye Bolt	Carbon Steel
84	Stud Bolt	ASTM A193 Gr. B7
81	Set Bolt	18Cr-8Ni S. Steel
52B	Hinge Pin	ASTM A182 Gr. F6a
52A	Hinge Pin	ASTM A182 Gr. F6a
51	Swing Lever	ASTM A105 *3
50	Washer	13% Cr. S. Steel
24B	Cover Retainer	ASTM A105
24A	Cover	ASTM A105 *2
3	Disc	ASTM A105 + STL *1
2	Body Seat Ring	ASTM A105 + STL
1	Body	ASTM A216 Gr. WCB
NO.	PART NAME	MATERIAL

- Note *1 14 in. & larger ASTM A216 Gr. WCB+STL
 *2 8 in. & larger ASTM A216 Gr. WCB
 *3 5 in. & larger ASTM A216 Gr. WCB
 *4 Soft iron pressure seal gasket



Dimensions (in./mm)

Nom. Size	in.	2	2-1/2	3	4	5	6	8	10	12	14	16	18	20	24	26	28	30	
	mm	50	65	80	100	125	150	200	250	300	350	400	450	500	600	650	700	750	
A1	in.	8-1/2	10	12	14	17	20	26	31	36	39	43	48	52	61	63	67	71	
	mm	216	254	305	356	432	508	660	787	914	991	1092	1219	1321	1549	1600	1702	1803	
A2	in.	14-1/2	16-1/2	15	18	22	24	29	33	38	40-1/2	44-1/2	48	52	61	65	69	73	
	mm	368	419	381	457	559	610	737	838	965	1029	1130	1219	1321	1549	1651	1753	1854	
A3	in.	14-5/8	16-5/8	15-1/8	18-1/8	22-1/8	24-1/8	29-1/8	33-1/8	38-1/8	40-7/8	44-7/8	48-1/2	52-1/2	61-3/4	65-7/8	69-7/8	73-7/8	
	mm	371	422	384	460	562	613	740	841	968	1038	1140	1232	1333	1568	1673	1775	1876	
H	in.	9-1/2	10-3/8	10-5/8	12-1/2	15-3/4	15-3/4	23-1/8	23-7/8	27-3/8	29-1/2	28-3/4	33-1/2	34	37-3/4	39-3/8	45-1/4	55-1/8	
	mm	241	264	270	318	400	400	587	606	695	749	730	851	864	959	1000	1149	1400	
Weight (Approx.)	RF	lb	88	121	115	232	364	507	1257	1874	2867	3418	3638	5072	6615	9041	10143	11466	13230
		Kg	40	55	52	105	165	230	570	850	1300	1550	1650	2300	3000	4100	4600	5200	6000
	BW	lb	44	71	66	143	221	353	970	1521	2249	2690	2977	4079	5292	6365	7938	8820	10143
		Kg	20	32	30	65	100	160	440	690	1020	1220	1350	1850	2400	2900	3600	4000	4600

ANSI 1500 CAST STEEL SWING CHECK VALVE PRESSURE SEAL COVER

■ Features

- End to end dimensions and Wall thicknesses conform to ANSI and API specifications.
- Flanged dimensions; 24 in. and smaller Valves conform to ANSI B16.5.
- 26 in. and larger Valves conform to API 605.
- Lift check valve also available. Data supplied upon request.

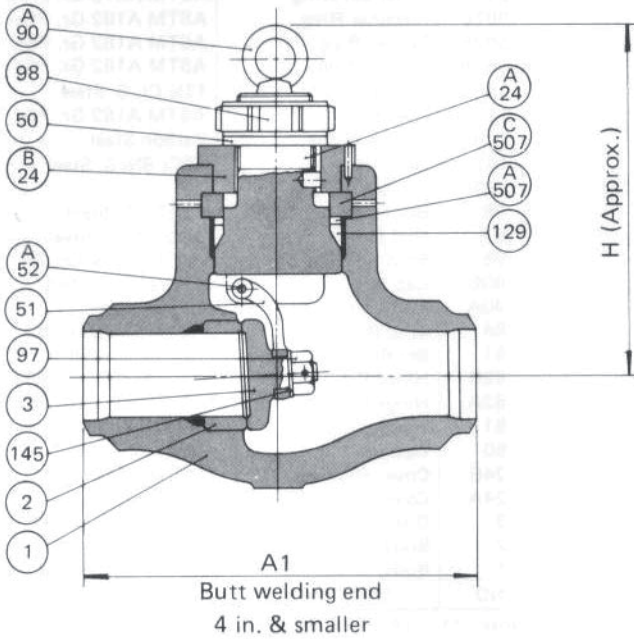


Figure No.

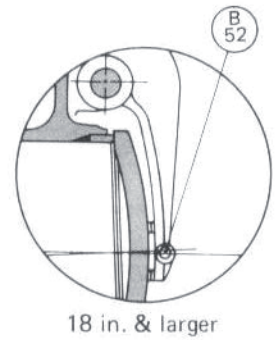
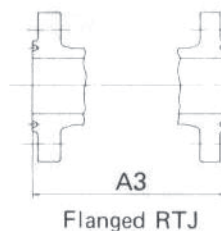
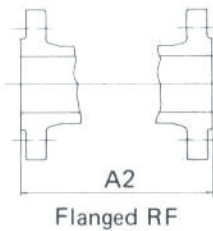
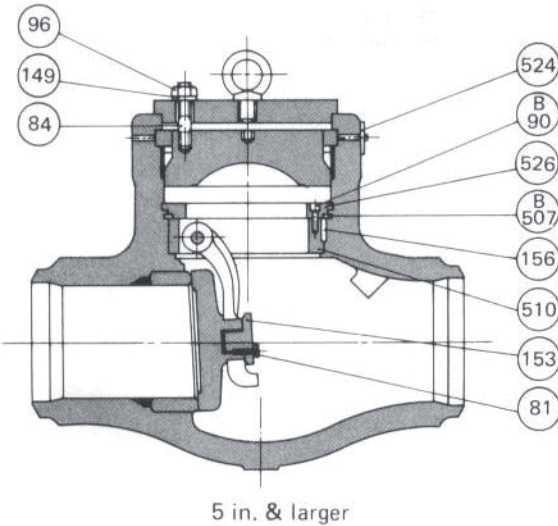
SC154WC	1500 lb Swing Check Weld
SC154RC	1500 lb Swing Check RF
SC154 JC	1500 lb Swing Check RTJ

Material Specifications

Trim No. 5

526	Plate	ASTM A105
524	Name Plate	18Cr-8Ni S. Steel
510	Lever Set Ring	ASTM A216 Gr. WCB
507C	Retainer Ring	ASTM A182 Gr. F6a
507B	Spacer Ring	ASTM A182 Gr. F6a
507A	Spacer Ring	ASTM A182 Gr. F6a
156	Knock Pin	13% Cr. S. Steel
153	Disc Plug	ASTM A182 Gr. F6a
149	Spring Washer	Carbon Steel
145	Disc Washer	18Cr-8Ni S. Steel
129	Gasket	*4
98	Bonnet Nut	13% Cr. S. Steel
97	Disc Nut	18Cr-8Ni S. Steel
96	Stud Bolt Nut	ASTM A194 Gr. 2H
90B	Cap Bolt	18Cr-8Ni S. Steel
90A	Eye Bolt	Carbon Steel
84	Stud Bolt	ASTM A193 Gr. B7
81	Set Bolt	18Cr-8Ni S. Steel
52B	Hinge Pin	ASTM A182 Gr. F6a
52A	Hinge Pin	ASTM A182 Gr. F6a
51	Swing Lever	ASTM A105 *3
50	Washer	13% Cr. S. Steel
24B	Cover Retainer	ASTM A105
24A	Cover	ASTM A105 *2
3	Disc	ASTM A105 + STL *1
2	Body Seat Ring	ASTM A105 + STL
1	Body	ASTM A216 Gr. WCB

- Note *1 14 in. & larger ASTM A216 Gr.WCB + STL
 *2 8 in. & larger ASTM A216 Gr.WCB
 *3 5 in. & larger ASTM A216 Gr.WCB
 *4 Soft iron pressure seal gasket



Dimensions (in./mm)

Nom. Size	in.	mm	2	2-1/2	3	4	5	6	8	10	12	14	16	18	20	24	26	28	30
A1	in.	mm	8-1/2	10	12	16	19	22	28	34	39	42	47	60-1/2	65-1/2	76-1/2	76-1/2	78	82
A2	in.	mm	14-1/2	16-1/2	18-1/2	21-1/2	26-1/2	27-3/4	32-3/4	39	44-1/2	49-1/2	54-1/2	60-1/2	65-1/2	76-1/2	76-1/2	78	82
A3	in.	mm	14-5/8	16-5/8	18-5/8	21-5/8	26-5/8	28	33-1/8	39-3/8	45-1/8	50-1/4	55-3/8	61-3/8	66-3/8	77-5/8	77-5/8	78	82
H	in.	mm	9-1/2	10-3/8	10-5/8	12-1/2	15-3/4	15-3/4	18-7/8	23-1/4	25-3/8	28	29-1/2	34-5/8	37-3/8	43-1/4	47-1/4	55-1/8	63
Weight (Approx.)	RF	lb	88	121	221	309	551	882	1345	2315	3418	4631	5733	7277	9261	13230	13230	13230	13230
	BW	lb	44	71	88	154	298	617	1058	1632	2426	3109	3528	4631	5733	7718	9261	11025	13230
		Kg	20	32	40	70	135	280	480	740	1100	1410	1600	2100	2600	3500	4200	5000	6000

7
PRESSURE SEAL COVER SWING CHECK VALVES

ANSI 2500 CAST STEEL SWING CHECK VALVE PRESSURE SEAL COVER

■ Features

- End to end dimensions and Wall thicknesses conform to ANSI and API specifications.
- Lift check valve also available. Data supplied upon request.

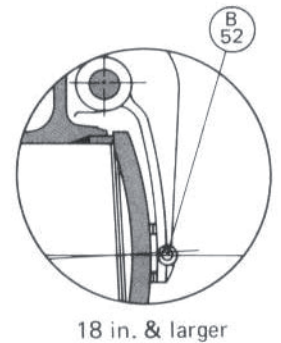
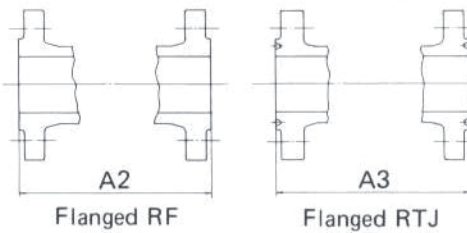
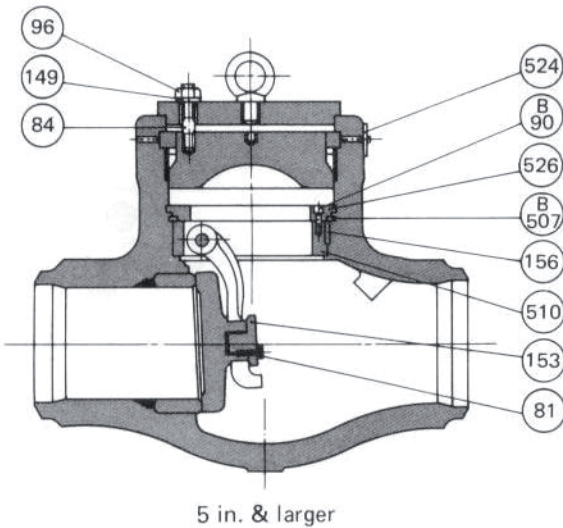
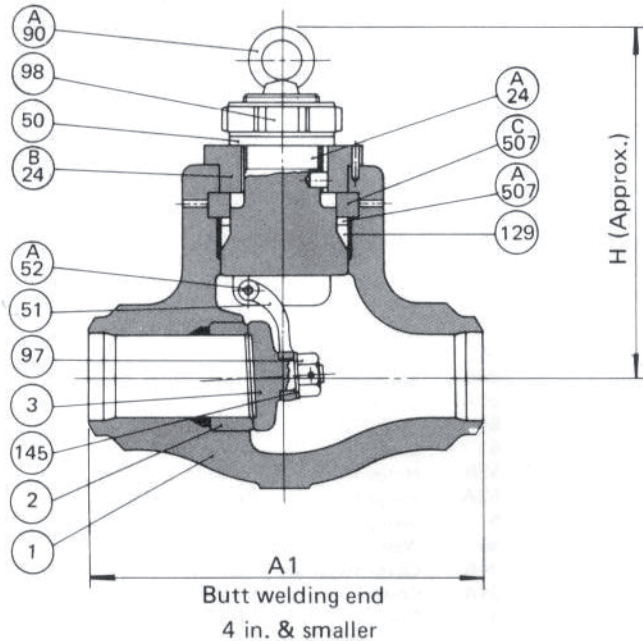


Figure No.

SC254WC	2500 lb Swing Check Weld
SC254 RC	2500 lb Swing Check RF
SC254 JC	2500 lb Swing Check RTJ

Material Specifications

Trim No. 5

526	Plate	ASTM A105
524	Name Plate	18Cr-8Ni S. Steel
510	Lever Set Ring	ASTM A216 Gr. WCB
507C	Retainer Ring	ASTM A182 Gr. F6a
507B	Spacer Ring	ASTM A182 Gr. F6a
507A	Spacer Ring	ASTM A182 Gr. F6a
156	Knock Pin	13% Cr. S. Steel
153	Disc Plug	ASTM A182 Gr. F6a
149	Spring Washer	Carbon Steel
145	Disc Washer	18Cr-8Ni S. Steel
129	Gasket	*4
98	Bonnet Nut	13%Cr. S. Steel
97	Disc Nut	18Cr-8Ni S. Steel
96	Stud Bolt Nut	ASTM A194 Gr. 2H
90B	Cap Bolt	18Cr-8Ni S. Steel
90A	Eye Bolt	Carbon Steel
84	Stud Bolt	ASTM A193 Gr. B7
81	Set Bolt	18Cr-8Ni S. Steel
52B	Hinge Pin	ASTM A182 Gr. F6a
52A	Hinge Pin	ASTM A182 Gr. F6a
51	Swing Lever	ASTM A105 *3
50	Washer	13%Cr. S. Steel
24B	Cover Retainer	ASTM A105
24A	Cover	ASTM A105 *2
3	Disc	ASTM A105 + STL *1
2	Body Seat Ring	ASTM A105 + STL
1	Body	ASTM A216 Gr. WCB

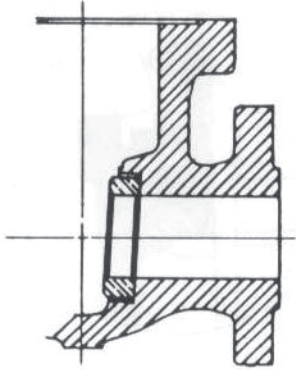
NO.	PART NAME	MATERIAL
-----	-----------	----------

- Note *1 14 in. & larger ASTM A216 Gr. WCB + STL
 *2 8 in. & larger ASTM A216 Gr. WCB
 *3 5 in. & larger ASTM A216 Gr. WCB
 *4 Soft iron pressure seal gasket

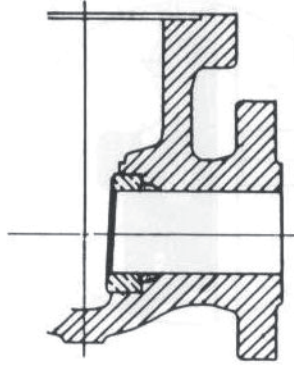
Dimensions (in./mm)

Nom. Size	in.	mm	2	2-1/2	3	4	5	6	8	10	12	14	16	18	20	24
A1	in.	mm	11	13	14-1/2	18	21	24	30	36	41	44	49	55	61	68
A2	in.	mm	17-3/4	20	22-3/4	26-1/2	31-1/4	36	40-1/4	50	56	-	-	-	-	-
A3	in.	mm	17-7/8	20-1/4	23	26-7/8	31-3/4	36-1/2	40-7/8	50-7/8	56-7/8	-	-	-	-	-
H	in.	mm	9-5/8	10-3/8	10-5/8	12-1/2	15-3/4	15-3/4	22	24-3/4	27-1/2	33-7/8	35-3/8	39-3/8	45-1/4	55-1/8
Weight (Approx.)	RF	lb	187	260	342	628	1091	1654	2977	4741	6615	-	-	-	-	-
	BW	lb	110	154	187	364	673	1014	1985	2867	3969	5402	7056	8930	11025	15876
		Kg	85	118	155	285	495	750	1350	2150	3000	-	-	-	-	-
		Kg	50	70	85	165	305	460	900	1300	1800	2450	3200	4050	5000	7200

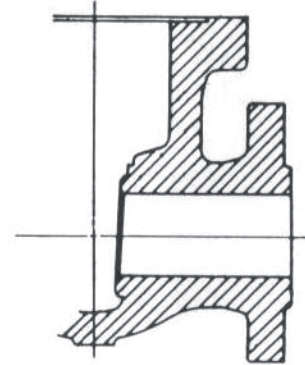
VALVE BODY SEAT CONSTRUCTION



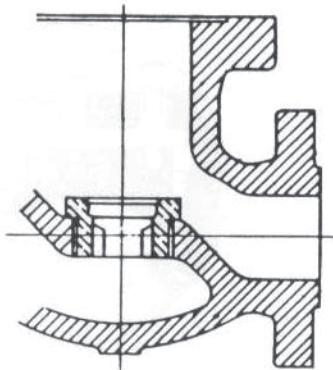
Threaded-In Seat Ring
in Gate Valve



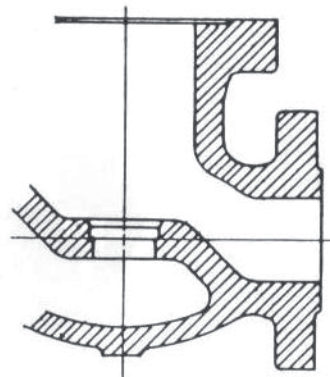
Welded-In Seat Ring
in Gate Valve



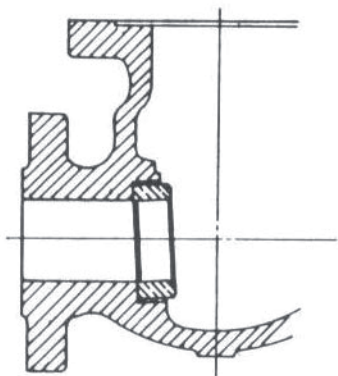
Integral Seat
in Gate Valve



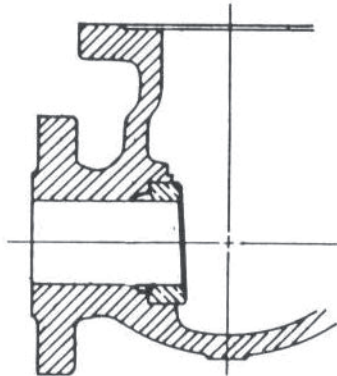
Threaded-In Seat Ring
in Globe Valve



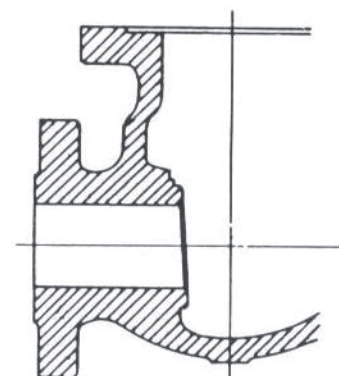
Integral Seat
in Globe Valve



Threaded-In Seat Ring
in Swing Check Valve



Welded-In Seat Ring
in Swing Check Valve

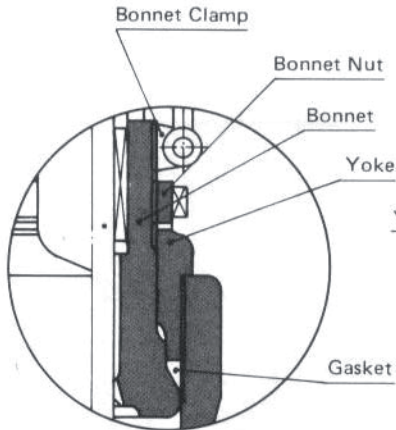


Integral Seat
in Swing Check Valve

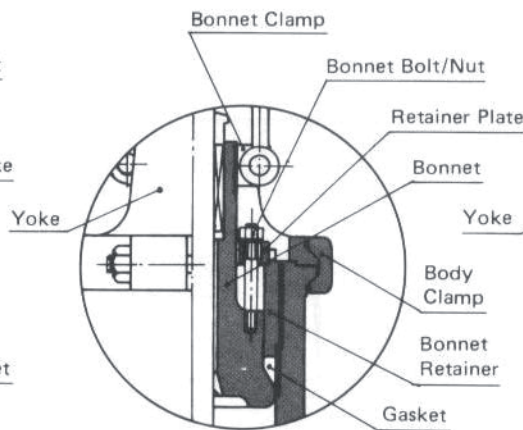
STANDARD BONNET CONSTRUCTION

PRESSURE SEAL TYPE

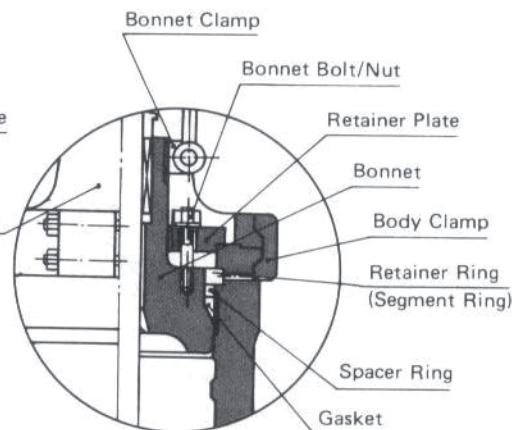
STANDARD BONNET CONSTRUCTION OF PRESSURE SEAL TYPE



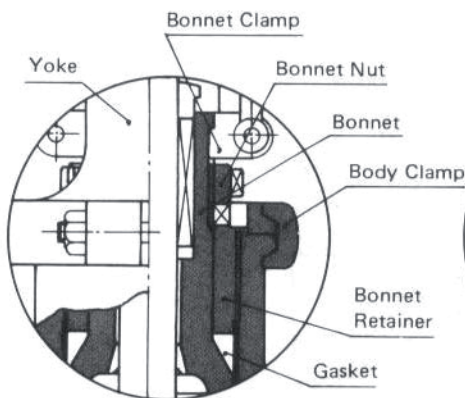
TYPE "A"
(Gate & Globe V.)



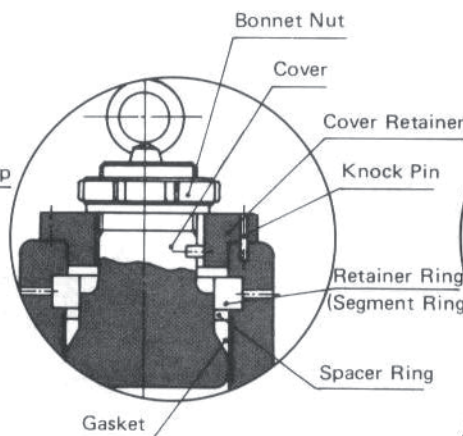
TYPE "B"
(Gate & Globe V.)



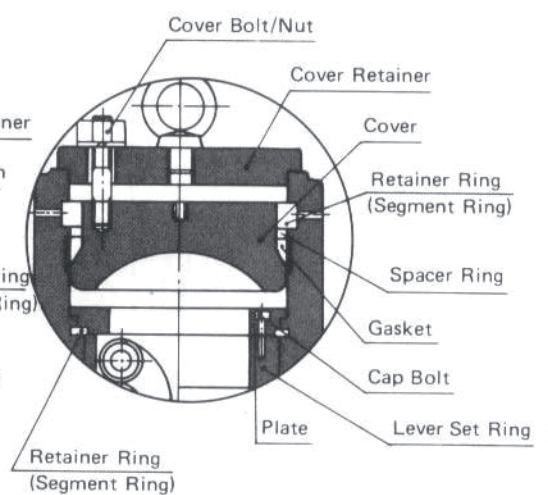
TYPE "C"
(Gate V.)



TYPE "D"
(Globe V.)



TYPE "E"
(Check V.)



TYPE "F"
(Check V.)

Classified Table of Standard Pressure Seal Bonnet/Cover

Size	Type Class	GATE			GLOBE			CHECK		
		900CL	1500CL	2500CL	900CL	1500CL	2500CL	900CL	1500CL	2500CL
2"	A	A	A	A	A	A	A	E	E	E
3"	A	A	A	A	A	A	A	E	E	E
4"	A	A	A	A	A	A	A	E	E	E
6"	B	B	B	B	D	D	D	F	F	F
8"	B	B	B	B	B	B	B	F	F	F
10"	C	C	C	C	B	B	B	F	F	F
12"	C	C	C	C	B	-	-	F	F	F
14" & Larger	C	C	C	C	-	-	-	F	F	F

Note: Special ordered valves are not included.